



**Adusumilli Gopalakrishnaiah & Sugarcane Growers
Siddhartha Degree College of Arts & Science**

Vuyyuru – 521165, Krishna District, Andhra Pradesh
(An Autonomous College in the Jurisdiction of Krishna University, Machilipatnam)

Accredited by NAAC with “A” Grade

Phone No: 08676-233267 Email ID: agsgsiddhartha@gmail.com website: <http://agsgsc.edu.in>

STUDENT SATISFACTORY SURVEY REPORT, 2017-2018

ABOUT THE SURVEY:

Students of an institution are the core stakeholders and every activity undertaken by the institute is focused on creating a barrier free and favorable environment for excelling in their academics. This survey includes majorly the questionnaire recommended by NAAC. The questionnaire can ask for feedback on a range of topics, including the class room experience, the performance of administrative functions, and the quality of extracurricular the institution offers. An online student satisfaction survey can be delivered in a variety of ways, but email is often the most effective method.

GUIDELINES FOR STUDENTS:

- A student will have to respond to all the questions compulsorily with sincere effort and thought.
- Student identity will not be revealed.
- This survey is being conducted by A.G & S.G Siddhartha Degree College of Arts& Science, Vuyyuru with the aim to upgrade the quality in higher education.
- Each question has five options and the students are required to choose the most appropriate one.
- Students are required to give answers for the following questions:
 1. Please confirm this is the first and only time you answer this survey.
 - a) Yes b) No
 2. Age:
 3. Branch / Department:
 4. Gender:
 - a) Female b) Male c) Transgender
 5. What degree program are you pursuing now?
 - a) Bachelor's b) Master's c) Doctorate d) Other

SURVEY PROCESS:

- The survey is conducted and reported by Internal Quality Assessment Cell (IQAC) with support of Heads and Coordinators of all the Departments. The Questioners were prepared in the form of Google Form and circulated to all the Departments and then to Students through Coordinators.
- The feedback was taken on different attributes like; *Basic Facilities, Basic Services, Co-curricular and Extracurricular Activities*. The responses obtained on these dimensions are compiled into a Spread Sheet, analyzed and Logical Conclusions are drawn there from.
- The Questionnaire consisting of 21 questions and shared to the students and the response are noted and analyzed graphically in terms of percentage. After analysis, results are analyzed by IQAC Team.

- The results of the survey will help the institution to understand both short term and long term needs of the students and initiate remedial action to improve the facilities wherever it is required. The outcome of this survey will provide a base for planning for the future.
- The IQAC sincerely thank all the members of the Management, Principal, and Heads of the Departments & Staff, Coordinators of the Departments for permissions and implementation of the survey. IQAC conveys thanks to the students who have expressed their opinions and / or views sincerely.

QUESTIONS ASKED IN QUESTIONNAIRE:

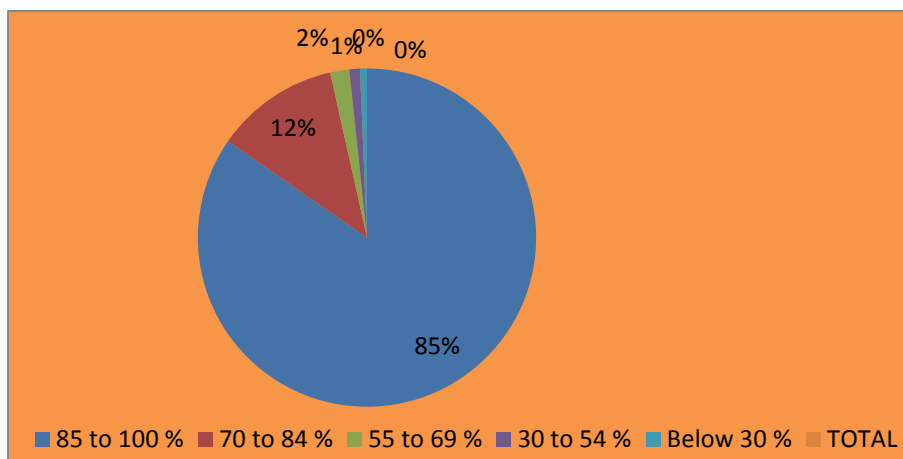
1. How much of the syllabus was covered in the class?
2. How well did the teachers prepare for the classes?
3. How well were the teachers able to communicate?
4. Does the institute take active interest in promoting internship, student exchange, and field visit opportunities for students?
5. Does the teaching and mentoring process in your institution facilitate you in cognitive, social and emotional growth?
6. Is the institution is providing multiple opportunities to learn and grow?
7. Are the teachers identifying your strengths and encouraging you by providing right level of challenges?
8. Do the teachers able to identify your weaknesses and help you to overcome them?
9. Does the institution makes effort to engage students in the monitoring, review and continuous quality improvement of the teaching learning process?
10. What percentage of teachers uses ICT Tools such as LCD Projector, Multimedia, and etc. while teaching?
11. The Teacher's approach to teaching can best be described as
12. Fairness of the internal evaluation process by the teachers
13. Was your performance in assignments discussed with you?
14. Do teachers inform you about your expected competencies, course outcomes and programme outcomes?
15. Your mentor does a necessary follow-up with an assigned task to you.
16. Do the teachers illustrate the concepts through examples and applications?
17. Does the institute / teachers use student centric methods, such as experiential learning, participative learning and problem solving methodologies for enhancing learning experiences?
18. Do teachers encourage you to participate in extracurricular activities?
19. Does the efforts are made by the institute / teachers to inculcate soft skills, life skills and employability skills to make you ready for the world of work?
20. Is overall quality of teaching-learning process in your institute is very good?

ANALYSIS OF QUESTIONNAIRE:

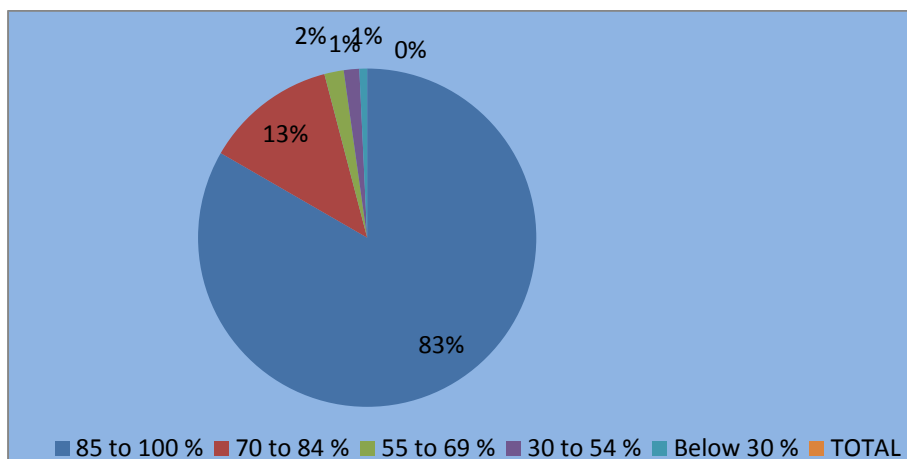
1. How much of the syllabus was covered in the class?

Opinions	Boy	%	Girl	%	Total	%
85 to 100 %	225	83	283	85	508	85
70 to 84 %	34	13	37	11	71	11
55 to 69 %	5	2	6	2	11	2
30 to 54 %	4	1	2	1	6	1
Below 30 %	2	1	2	1	4	1
Total	270	100	330	100	600	100

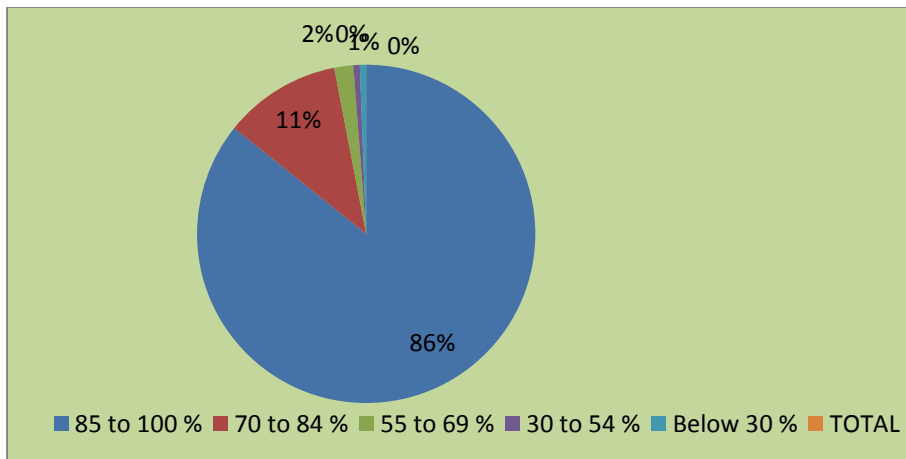
(a) The satisfaction of students in the campus with respect to the question **“How much of the syllabus was covered in the class?”** is analyzed. The analysis of the survey shows that 85% with satisfaction level 85% to 100%, 11 % with satisfaction level of 70 to 84%, 2% with satisfaction level of 55 to 69%, 1% with satisfaction level of 30 to 54%, 1% with satisfaction level of below 30%.



(b) The satisfaction of boy students in the campus with respect to the question **“How much of the syllabus was covered in the class?”** is analyzed. The analysis of the survey shows that 83% with satisfaction level 85% to 100%, 13% with satisfaction level of 70 to 84%, 2% with satisfaction level of 55 to 69%, 1% with satisfaction level of 30 to 54%, 0% with satisfaction level 30%.



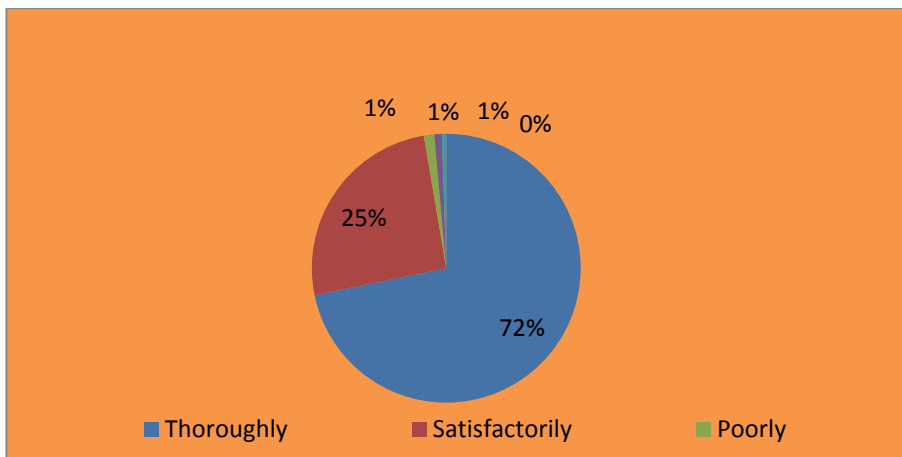
(c) The satisfaction of girl students in the campus with respect to the question **“How much of the syllabus was covered in the class?”** is analyzed. The analysis of the survey shows that 86% with satisfaction level 85% to 100%, 13% with satisfaction level of 70 to 84%, 2% with satisfaction level of 55 to 69%, 1 % with satisfaction level of 30 to 54%, 0% with satisfaction level 30%.



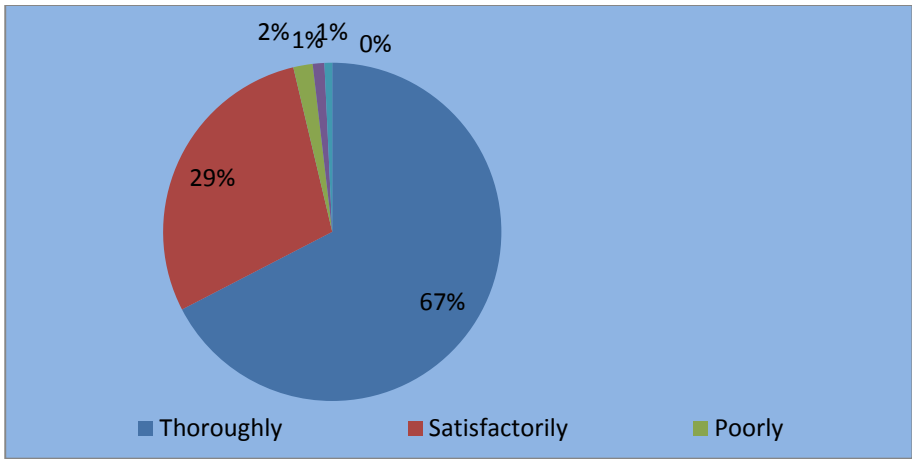
2. **How well did the teachers prepare for the classes?**

Opinions	Boy	%	Girl	%	Total	%
Thoroughly	182	67	260	79	402	72
Satisfactorily	78	29	65	20	143	25
Poorly	5	2	2	1	7	1
Indifferently	3	1	2	0	5	1
Won't teach at all	2	1	1	0	3	0
Total	270	100	330	100	600	100

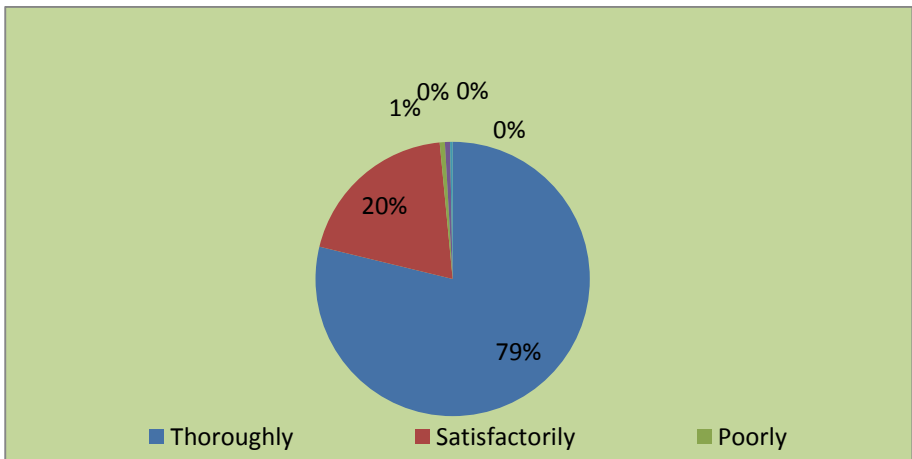
(a) The opinion of students in the campus for the question **“How well did the teachers prepare for the classes?”** is analyzed. The analysis of survey illustrates that 72% are conveyed that the teachers are preparing thoroughly, 25% of students conveyed that the teachers are preparing satisfactorily, 1% of students conveyed that the teachers are preparing poorly, 1% of students are conveyed that the teachers are preparing indifferently, 0% of teachers are conveying that teachers won't teach at all.



(b) The opinion of boy students in the campus for the question **“How well did the teachers prepare for the classes?”** is analyzed. The analysis of survey illustrate that 67% are conveyed that the teachers are preparing thoroughly, 29% of students conveyed that the teachers are preparing satisfactorily, 2% of students conveyed that the teachers are preparing poorly, 1% of students are conveyed that the teachers are preparing indifferently, 0% of teachers are conveying that teachers won't teach at all.



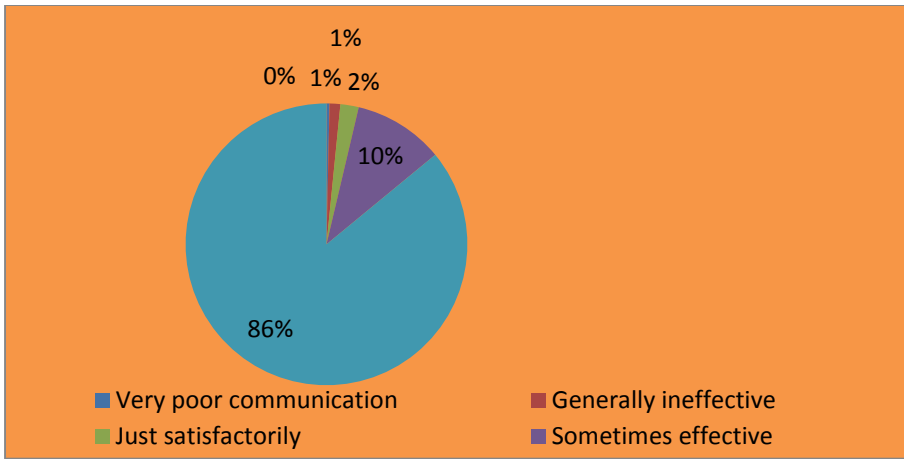
(c) The opinion of boy students in the campus for the question *“How well did the teachers prepare for the classes?”* is analyzed. The analysis of survey illustrate that 79% are conveyed that the teachers are preparing thoroughly, 20% of students conveyed that the teachers are preparing satisfactorily, 1% of students conveyed that the teachers are preparing poorly, 1% of students are conveyed that the teachers are preparing differently, 1% of teachers are conveying that teachers won’t teach at all.



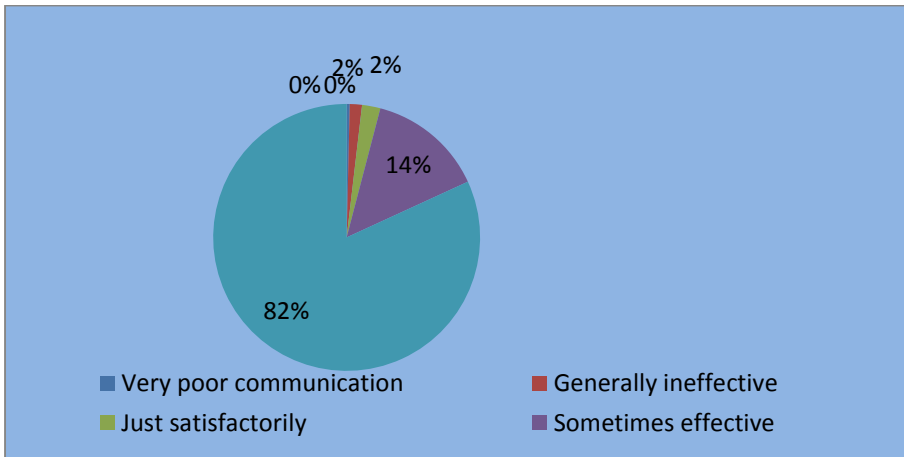
3. How well were the teachers able to communicate?

Opinions	Boy	%	Girl	%	Total	%
<i>Very poor communication</i>	1	1	1	1	2	1
Generally ineffective	4	1	3	1	7	1
Just satisfactorily	6	2	6	2	12	2
Sometimes effective	38	14	51	15	59	10
Always effective	221	82	269	81	490	86
Total	270	100	330	100	600	100

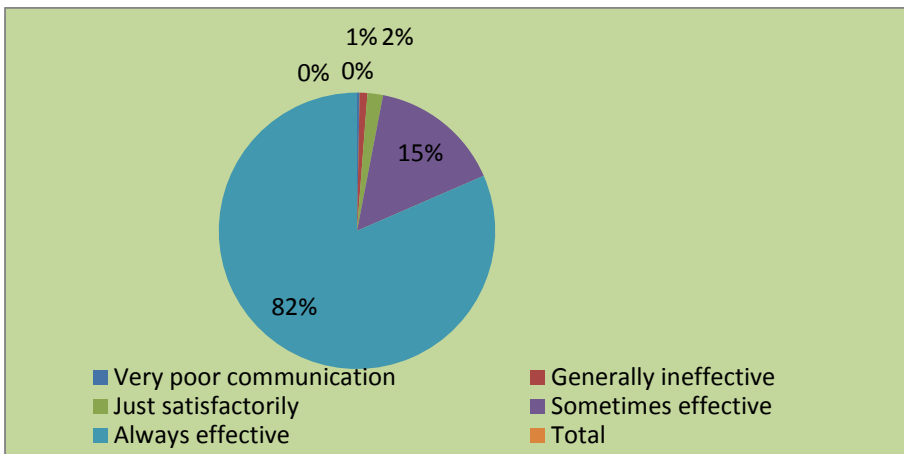
(a) The opinion of students in the campus for the question *“How well were the teachers able to communicate?”* is analyzed. The analysis of survey shows that 86% of students conveyed that the teachers are able to communication effectively with students, 10% of students conveyed that the teachers are sometimes effective while communicating with students, 2% of students conveyed that the communication of teachers with the students are just satisfactorily, 1% of students conveyed that the teachers are ineffective while communicating with the students. 1% students convey that the communication of teaches with students are very poor.



(b) The opinion of boy students in the campus for the question ***“How well were the teachers able to communicate?”*** is analyzed. The analysis of survey shows that 82% of students conveyed that the teachers are able to communication always effectively with students, 14% of students conveyed that the teachers are sometimes effective while communicating with students, 2%of students conveyed that the communication of teachers with the students are just satisfactorily, 2% of students conveyed that the teachers are in effective while communicating with the students. 0% students conveyed that the communication of teaches with students are very poor.



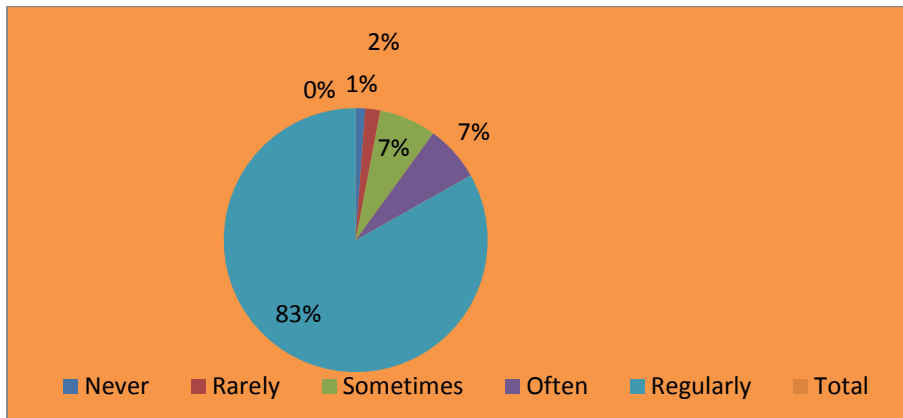
(c) The opinion of girl students in the campus for the question ***“How well were the teachers able to communicate?”*** is analyzed. The analysis of survey shows that 82% of students conveyed that the teachers are able to communication effectively with students, 12 of students conveyed that the teachers are sometimes effective while communicating with students, 15% of students conveyed that the communication of teachers with the students are just satisfactorily, 2% of students conveyed that the teachers are in effective while communicating with the students. 0% students conveyed that the communication of teaches with students are very poor.



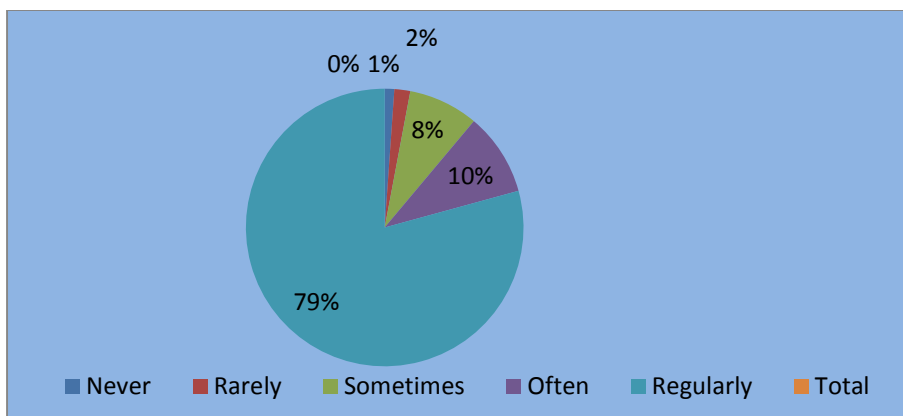
4. Does the institute take active interest in promoting internship, student exchange, and field visit opportunities for students?

Opinions	Boy	%	Girl	%	Total	%
Never	3	1	4	1	7	1
Rarely	5	2	6	2	11	2
Sometimes	22	8	20	6	42	7
Often	26	10	15	5	41	7
Regularly	214	79	285	86	499	83
Total	270	100	330	100	600	100

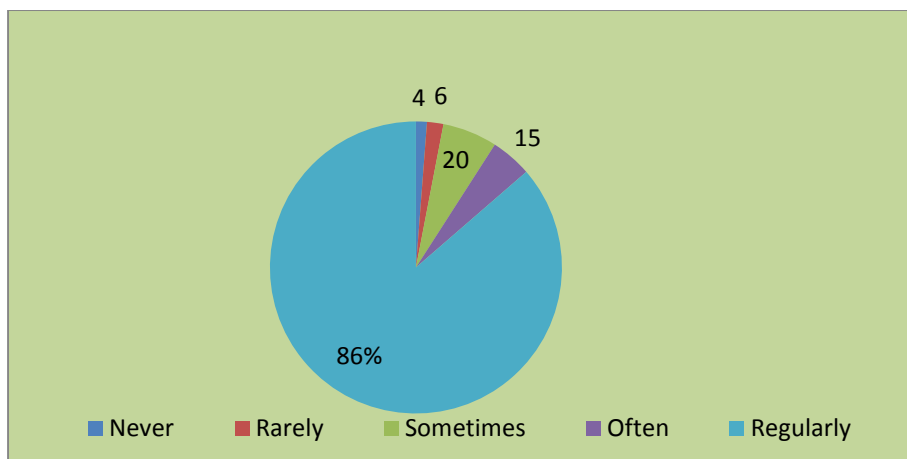
(a) The view of students in the institution for the question “Does the institute take active interest in promoting internship, student exchange, field visit opportunities for students?” is analyzed. The analysis of survey shows that 83% of students express that the institute takes active interest in promoting internship, student exchange, field visit opportunities for students regularly, 7% of students express that the institute takes active interest in promoting internship, student exchange, field visit opportunities for students often, 7% of students express that the institute takes active interest in promoting internship, student exchange, field visit opportunities for students sometimes, 2% of students express that the institute takes active interest in promoting internship, student exchange, field visit opportunities for students rarely, 1% of students express that the institute takes active interest in promoting internship, student exchange, field visit opportunities for students never.



(b) The view of boy students in the institution for the question “Does the institute take active Interest in promoting internship, student exchange, field visit opportunities for students?” is analyzed. The analysis of survey shows that 79% of students express that the institute takes active interest in promoting internship, student exchange, field visit opportunities for students regularly, 10% of students express that the institute takes active interest in promoting internship, student exchange, field visit opportunities for students often, 8% of students express that the institute takes active interest in promoting internship, student exchange, field visit opportunities for students sometimes, 2% of students express that the institute takes active interest in promoting internship, student exchange, field visit opportunities for students rarely, 1% of students express that the institute takes active interest in promoting internship, student exchange, field visit opportunities for students never.



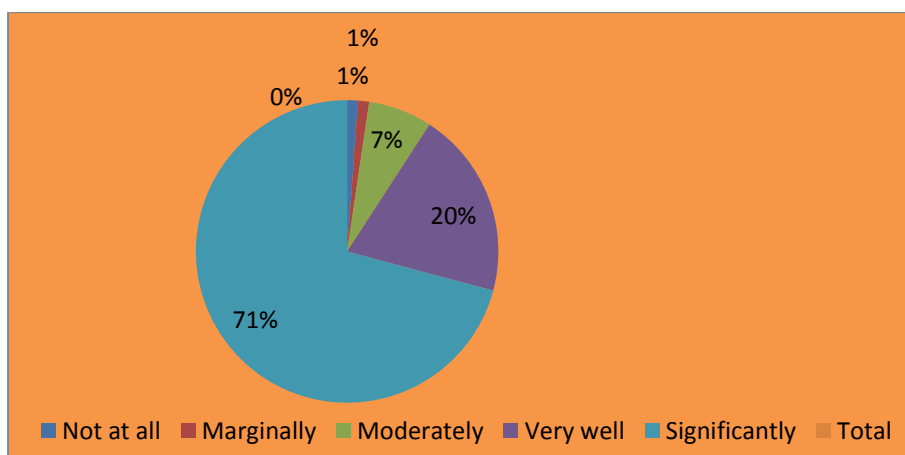
(c) The view of girl students in the institution for the question **“Does the institute take active interest in promoting internship, student exchange, field visit opportunities for students?”** is analyzed. The analysis of survey shows that 86% of students express that the institute takes active interest in promoting internship, student exchange, field visit opportunities for students regularly, 15% of students express that the institute takes active interest in promoting internship, student exchange, field visit opportunities for students often, 20% of students express that the institute takes active interest in promoting internship, student exchange, field visit opportunities for students sometimes, 6% of students express that the institute takes active interest in promoting internship, student exchange, field visit opportunities for students rarely, 4% of students express that the institute takes active interest in promoting internship, student exchange, field visit opportunities for students never.



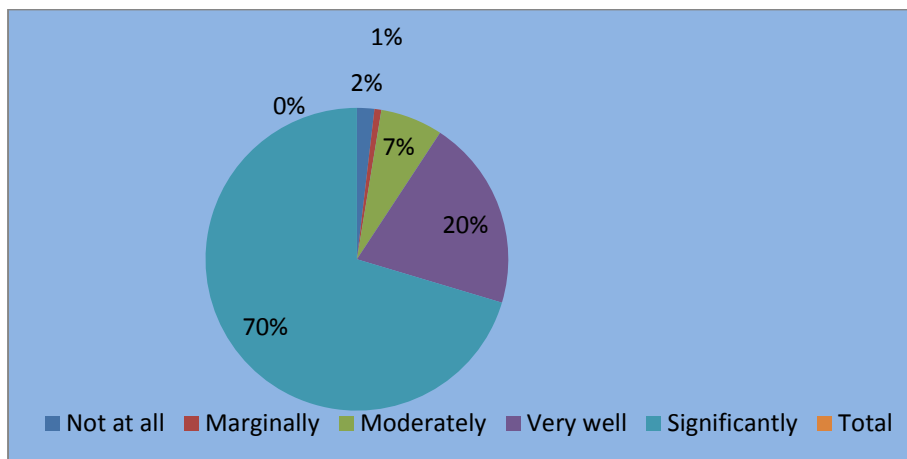
5. **Does the teaching and mentoring process in your institution facilitate you in cognitive, social and emotional growth?**

Opinions	Boy	%	Girl	%	Total	%
Not at all	5	2	2	1	7	1
Marginally	2	1	5	2	7	1
Moderately	18	7	23	7	41	7
Very well	55	20	65	19	120	20
Significantly	190	70	235	71	425	71
Total	270	100	330	100	600	100

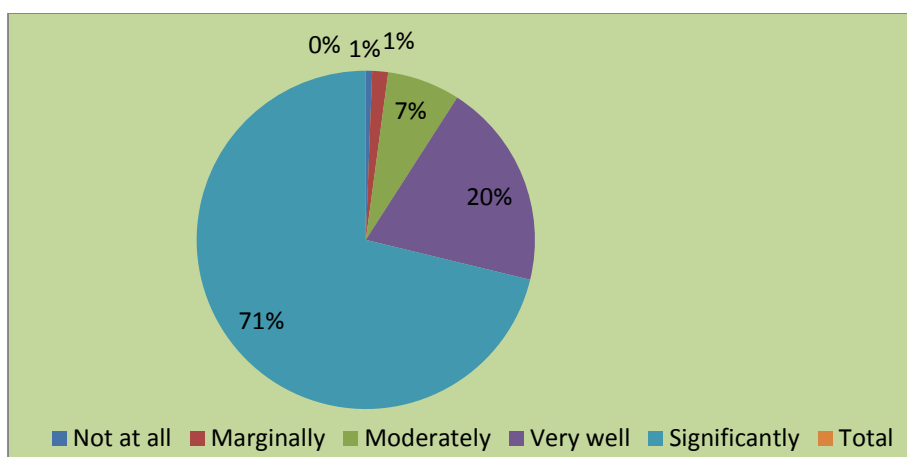
(a) The opinion of students in the institution for the question **“Does the teaching and mentoring process in your institution facilitate you in cognitive, social and emotional growth?”** is analyzed. The analysis of survey shows that 70% of students express that the teaching and mentoring process in your institution facilitate you in cognitive, social and emotional growth is Significantly, 20% of students express that the teaching and mentoring processing your institution facilitate you in cognitive, social and emotional growth is Very well,7%of students express that the teaching and mentoring process in your institution facilitate you in cognitive, social and emotional growth is Moderately,1% of students express that the teaching and mentoring process in your institution facilitate you in cognitive, social and emotional growth is Marginally, 1% of students express that the teaching and mentoring process in your institution facilitate you in cognitive, social and emotional growth is Not at all.



- (b) The opinion of boy students in the institution for the question ***“Does the teaching and mentoring process in your institution facilitate you in cognitive, social and emotional growth?”*** is analyzed. The analysis of survey shows that 70% of students express that the teaching and mentoring process in your institution facilitate you in cognitive, social and emotional growth is Significantly, 20% of students express that the teaching and mentoring process in your institution facilitate you in cognitive, social and emotional grow this Very well, 7% of students express that the teaching and mentoring process in your institution facilitate you in cognitive, social and emotional grow this Moderately, 1% of students express that the teaching and mentoring process in your institution facilitate you in cognitive, social and emotional growth is Marginally, 2% of students express that the teaching and mentoring process in your institution facilitate you in cognitive, social and emotional grow this Not at all.



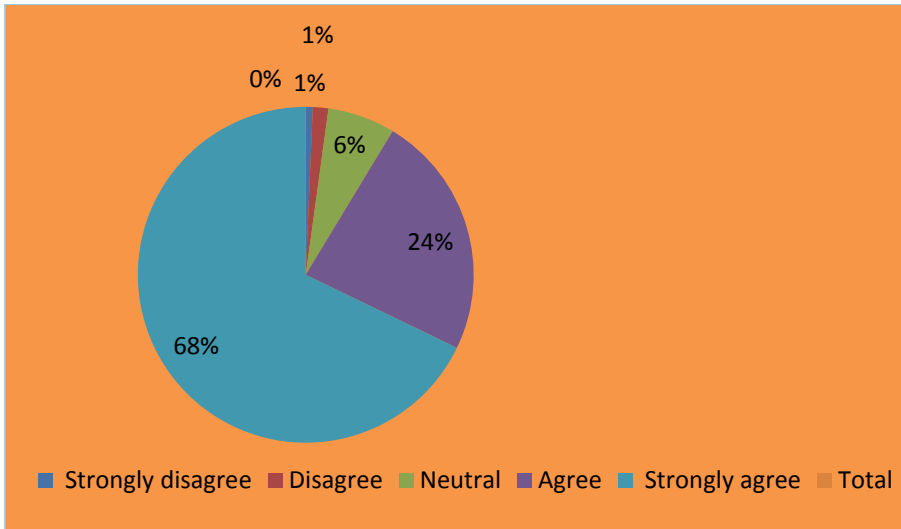
- (c) The opinion of girl students in the institution for the question ***“Does the teaching and mentoring process in your institution facilitate you in cognitive, social and emotional growth?”*** is analyzed. The analysis of survey shows that 71% of students express that the teaching and mentoring process in your institution facilitate you in cognitive, social and emotional growth is Significantly, 20% of students express that the teaching and mentoring process in your institution facilitate you in cognitive, social and emotional grow this Very well, 7% of students express that the teaching and mentoring process in your institution facilitate you in cognitive, social and emotional growth is Moderately, 1% of students express that the teaching and mentoring process in your institution facilitate you in cognitive, social and emotional growth is Marginally, 1% of students express that the teaching and mentoring process in your institution facilitate you in cognitive, social and emotional grow this Not at all.



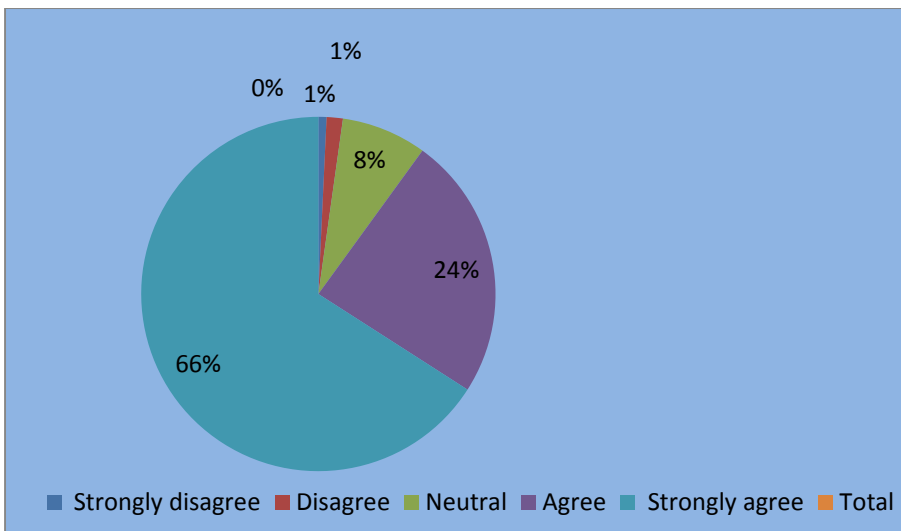
6. Is the institution is providing multiple opportunities to learn and grow?

Opinions	Boy	%	Girl	%	Total	%
<i>Strongly disagree</i>	2	1	2	1	4	1
Disagree	4	1	5	1	9	1
Neutral	21	8	18	6	39	6
Agree	65	24	76	23	141	24
Strongly agree	178	66	229	69	407	68
Total	270	100	330	100	600	100

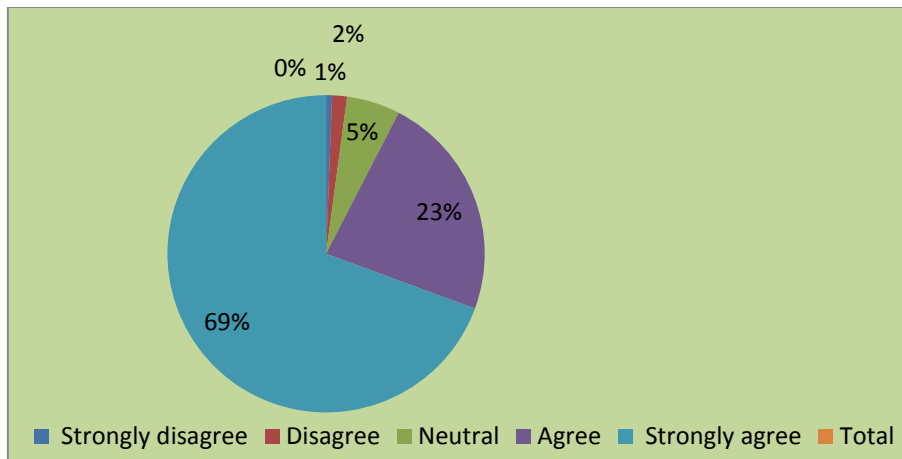
- (a) The opinion of students in the institution for the question **“Is the institution is providing multiple opportunities to learn and grow”** analyzed. The analysis of survey shows that 68% of students strongly agree that the institution provide multiple opportunities to learn and grow, 24% of students agree that the institution provide multiple opportunities to learn and grow, 6% of students neutral that the institution provide multiple opportunities to learn and grow, 1% of student disagree that the institution provide multiple opportunities to learn and grow, 1% of students strongly disagree that the institution provide multiple opportunities to learn and grow.



- (b) The opinion of boy students in the institution for the question **“Is the institution is providing multiple opportunities to learn and grow?”** is analyzed. The analysis of survey shows that 66% of students strongly agree that the institution provide multiple opportunities to learn and grow, 24%of students agree that the institution provide multiple opportunities to learn and grow, 8% of students neutral that the institution provide multiple opportunities to learn and grow, 1% of students disagree that the institution provide multiple opportunities to learn and grow, 1% of students strongly disagree that the institution provide multiple opportunities to learn and grow.



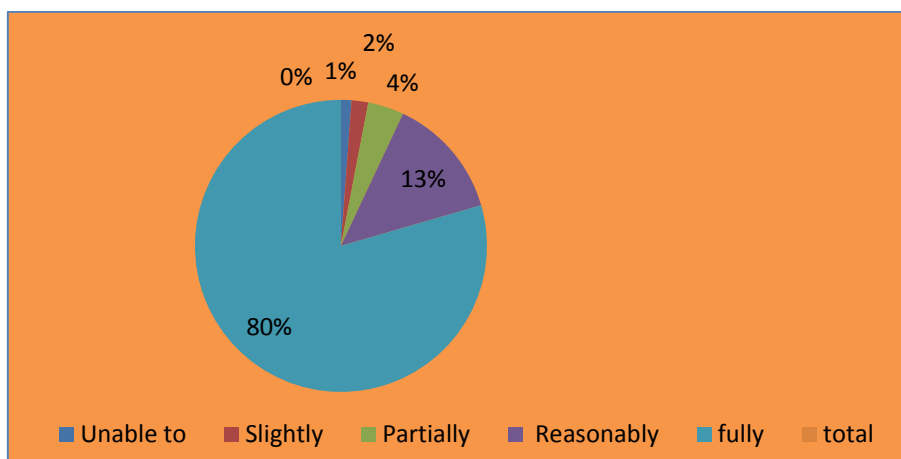
- (c) The opinion of girl students in the institution for the question **“Is the institution is providing multiple opportunities to learn and grow?”** is analyzed. The analysis of survey shows that 69% of students strongly agree that the institution provide multiple opportunities to learn and grow, 23% of students agree that the institution provide multiple opportunities to learn and grow, 5% of students neutral that the institution provide multiple opportunities to learn and grow, 2% of students disagree that the institution provide multiple opportunities to learn and grow, 1% of students strongly disagree that the institution provide multiple opportunities to learn and grow.



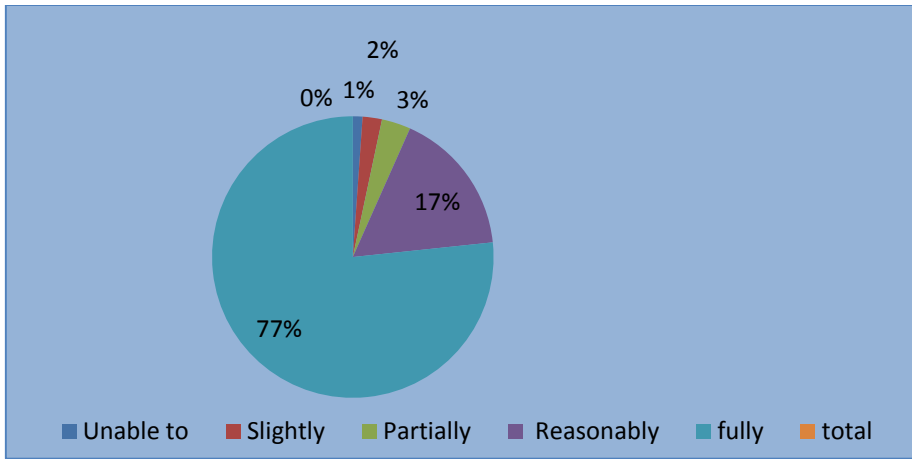
7. *Are the teachers identifying your strengths and encouraging you by providing right level of challenges?*

Opinions	Boy	%	Girl	%	Total	%
Unable to	3	1	4	1	7	1
Slightly	6	2	5	2	11	2
Partially	9	3	15	5	24	4
Reasonably	45	17	36	11	81	13
fully	207	77	270	8	477	80
total	270	100	330	100	600	100

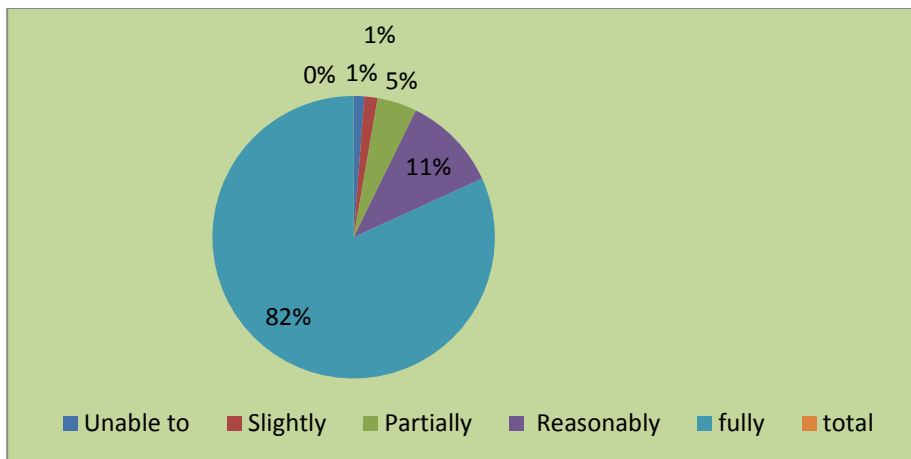
(a) The opinion of the students in the institution for the question “*Are the teachers identifying your strengths and encouraging you by providing right level of challenges?*” is analyzed. The analysis of survey shows that 80% of students fully agree that the teachers identify the strengths of and encouraging them by proving right level of challenges. 13% of students reasonably agree that the teachers identify the strengths of and encouraging them by proving right level of challenges, 4% of students partially agree that the teachers identify the strengths of and encouraging them by proving right level of challenges, 2% of students slightly agree that the teachers identify the strengths of and encouraging them by proving right level of challenges, 1% of students Unable to agree that the teachers identify the strengths of and encouraging them by proving right level of challenges.



(b) The opinion of the boy students in the institution for the question “*Are the teachers identifying your strengths and encouraging you by providing right level of challenges?*” is analyzed. The analysis of survey shows that 77% of students fully agree that the teachers identify the strengths of and encouraging them by proving right level of challenges. 17% of students reason ably agree that the teachers identify the strengths of and encouraging them by proving right level of challenges, 3% of students partially agree that the teachers identify the strengths of and encouraging them by proving right level of challenges, 2% of students slightly agree that the teachers identify the strengths of and encouraging them by proving right level of challenges, 1% of students Unable to agree that the teachers identify the strengths of and encouraging them by proving right level of challenges.



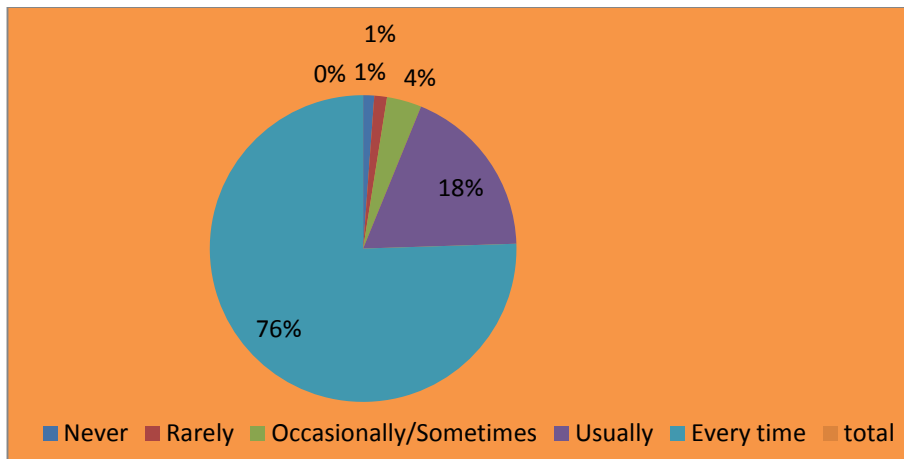
(c) The opinion of girl students in the institution for the question **“Are the teachers identifying your strengths and encouraging you by providing right level of challenges?”** is analyzed. The analysis of survey shows that 82% of students fully agree that the teachers identify the strengths of and encouraging them by proving right level of challenges. 11% of students reasonably agree that the teachers identify the strengths of and encouraging them by proving right level of challenges, 5% of students partially agree that the teachers identify the strengths of and encouraging them by proving right level of challenges, 1% of students slightly agree that the teachers identify the Strengths of and encouraging them by proving right level of challenges, 1% of students partially agree that the teachers identify the strengths of and encouraging them by proving right level of challenges.



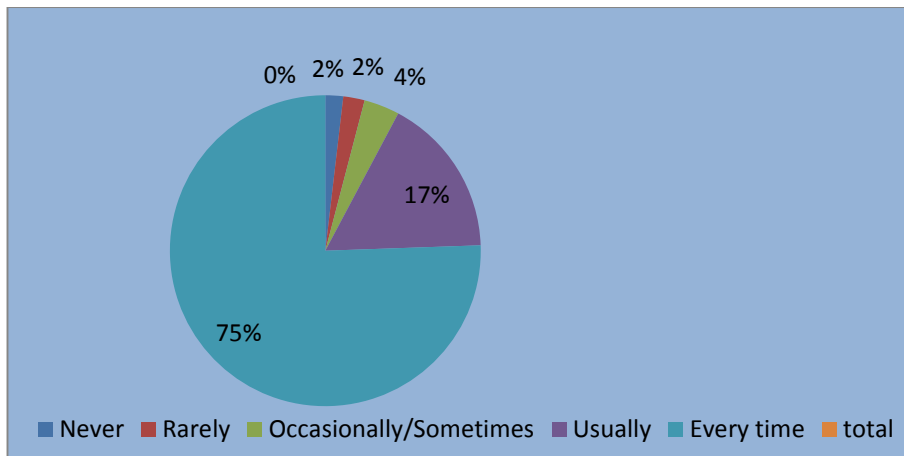
8. Do the teachers identify your weaknesses and help you to overcome them?

Opinions	Boy	%	Girl	%	Total	%
Never	5	2	2	1	7	1
Rarely	6	2	2	1	8	1
Occasionally/Sometimes	10	4	12	4	22	4
Usually	45	16	65	19	110	18
Every time	204	76	249	75	453	76
total	270	100	330	100	600	100

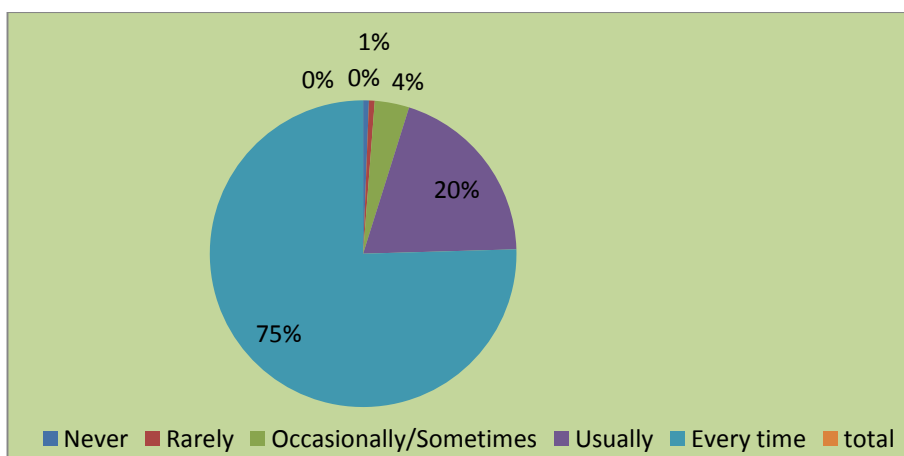
(a) The opinion of the students in the institution for the question **“Do the teachers identify your weaknesses and help you to overcome them?”** is analyzed. 76% of students conveyed that the teachers are able to identify the weaknesses and help them overcome from weaknesses every time. 18% of students conveyed that the teachers are able to identify the weaknesses and help them overcome from weaknesses usually. 4% of students conveyed that the teachers are able to identify the weaknesses and help them overcome from weaknesses occasionally. 1% of students conveyed that the teachers are able to identify the weaknesses and help them overcome from weaknesses rarely. 1% of students conveyed that the teachers are never able to identify the weaknesses and help them overcome from weaknesses.



(b) The opinion of the boy students in the institution for the question ***“Do the teachers identify your weaknesses and help you to overcome them?”*** Is analyzed. 75% of students conveyed that the teachers are able to identify the weaknesses and help them overcome from weaknesses every time.17% of students conveyed that the teachers are able to identify the weaknesses and help them overcome from weaknesses usually. 4% of students conveyed that the teachers are able to identify the weaknesses and help them overcome from weaknesses occasionally. 2% of students conveyed that the teachers are able to identify the weaknesses and help them overcome from weaknesses rarely. 2% of students conveyed that the teachers are never able to identify the weaknesses and help them overcome from weaknesses



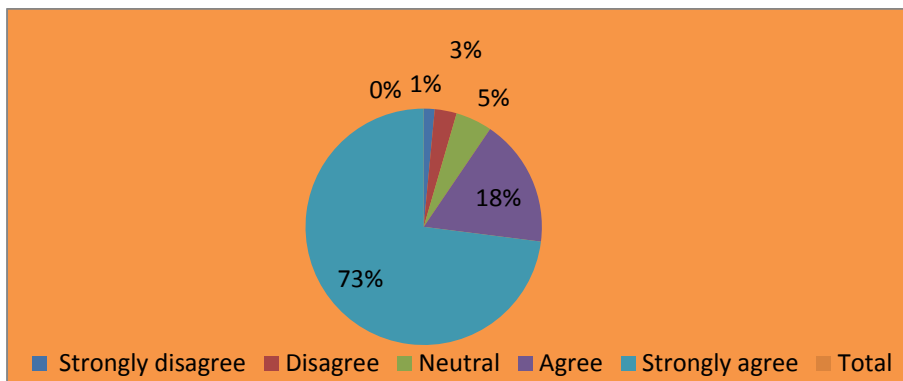
(c) The opinion of the girl students in the institution for the question ***“Do the teachers identify your weaknesses and help you to overcome them?”*** is analyzed. 75% of students conveyed that the teachers are able to identify the weaknesses and help them overcome from weaknesses every time. 20% of students conveyed that the teachers are able to identify the weaknesses and help them overcome from weaknesses usually. 4% of students conveyed that the teachers are able to identify the weaknesses and help them overcome from weaknesses occasionally. 1% of students conveyed that the teachers are able to identify the weaknesses sand help them overcome from weaknesses rarely. 0% of students conveyed that the teachers are never able to identify the weaknesses and help them overcome from weaknesses.



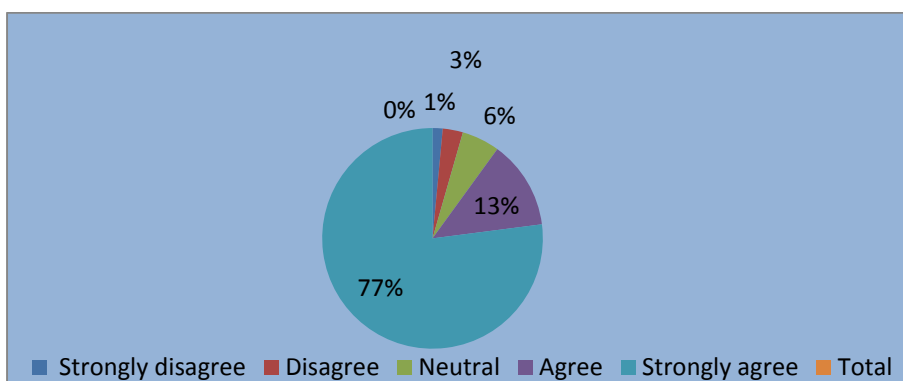
9. *Does the institution make effort to engage students in the monitoring, review and continuous quality improvement of the teaching learning process?*

Opinions	Boy	%	Girl	%	Total	%
<i>Strongly disagree</i>	4	1	5	2	9	1
Disagree	8	3	10	4	18	3
Neutral	15	6	15	5	30	5
Agree	35	13	70	19	105	18
Strongly agree	208	77	230	70	438	73
Total	270	100	330	100	600	100

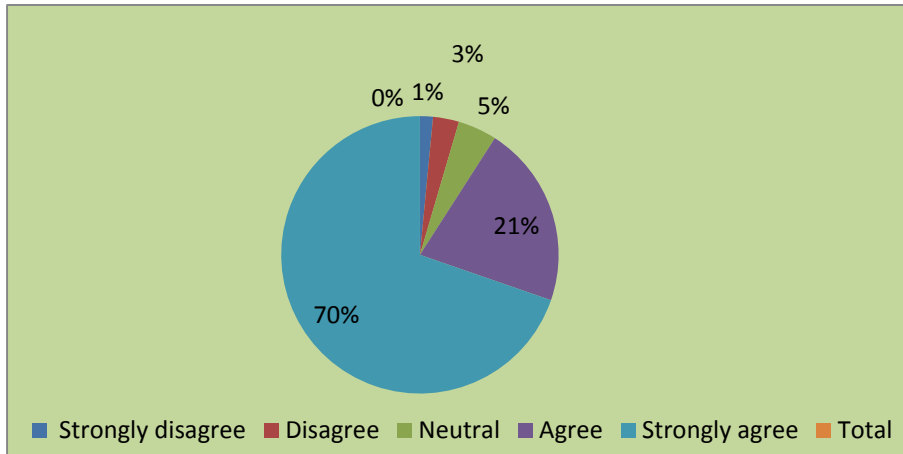
(a) The opinion of students in the campus for the question *“Does the institution makes effort to engage students in the monitoring, review and continuous quality improvement of the teaching learning process?”* is analyzed. The analysis of survey shows that 73% of students strongly agree that The institution makes effort to engage students in the monitoring, review and continuous quality improvement of the teaching learning process, 18% of students agree that the institution makes effort to engage students in the monitoring, review and continuous quality improvement of the teaching learning process, 5% of students are neutral that the institution makes effort to engage students in the monitoring, review and continuous quality improvement of the teaching learning process, 3% of students disagree that the institution makes effort to engage students in the monitoring, review and continuous quality improvement of the teaching learning process. 1% students strongly disagree that the institution makes effort to engage students in the monitoring, review and continuous quality improvement of the teaching learning process.



(b) The opinion of boy students in the campus for the question *“Does the institution makes effort to engage students in the monitoring, review and continuous quality improvement of the teaching learning process?”* is analyzed. The analysis of survey shows that 77% of students strongly agree that The institution makes effort to engage students in the monitoring, review and continuous quality improvement of the teaching learning process, 13% of students agree that the institution makes effort to engage students in the monitoring, review and continuous quality improvement of the teaching learning process, 6% of students are neutral that the institution makes effort to engage students in the monitoring, review and continuous quality improvement of the teaching learning process, 3% of students disagree that the institution makes effort to engage students in the monitoring, review and continuous quality improvement of the teaching learning process. 1% students strongly disagree that the institution makes effort to engage students in the monitoring, review and continuous quality improvement of the teaching learning process.



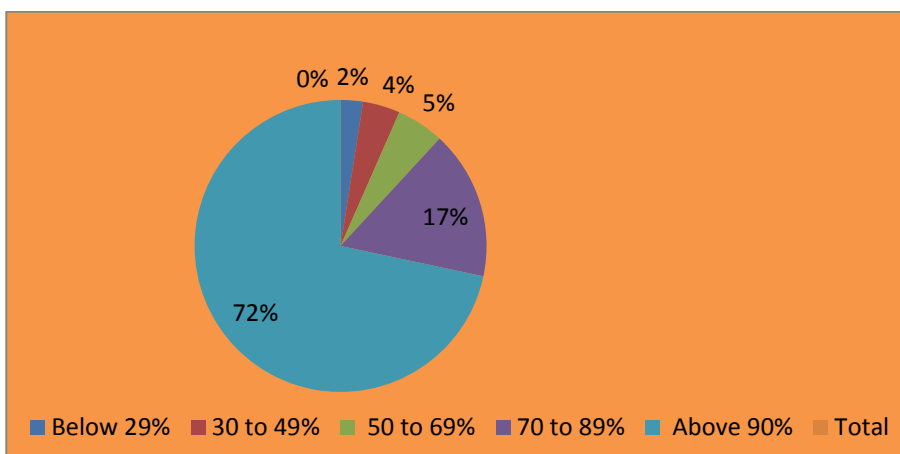
- (c) The opinion of girl students in the campus for the question **“Does the institution makes effort to engage students in the monitoring, review and continuous quality improvement of the teaching learning process?”** is analyzed. The analysis of survey shows that 70% of students strongly agree that the institution makes effort to engage students in the monitoring, review and continuous quality improvement of the teaching learning process, 21% of students agree that the institution makes effort to engage students in the monitoring, review and continuous quality improvement of the teaching learning process, 5% of students are neutral that The institution makes effort to engage students in the monitoring, review and continuous quality improvement of the teaching learning process, 3% of students disagree that the institution makes effort to engage students in the monitoring, review and continuous quality improvement of the teaching learning process. 1% students strongly disagree that the institution makes effort to engage students in the monitoring, review and continuous quality improvement of the teaching learning process.



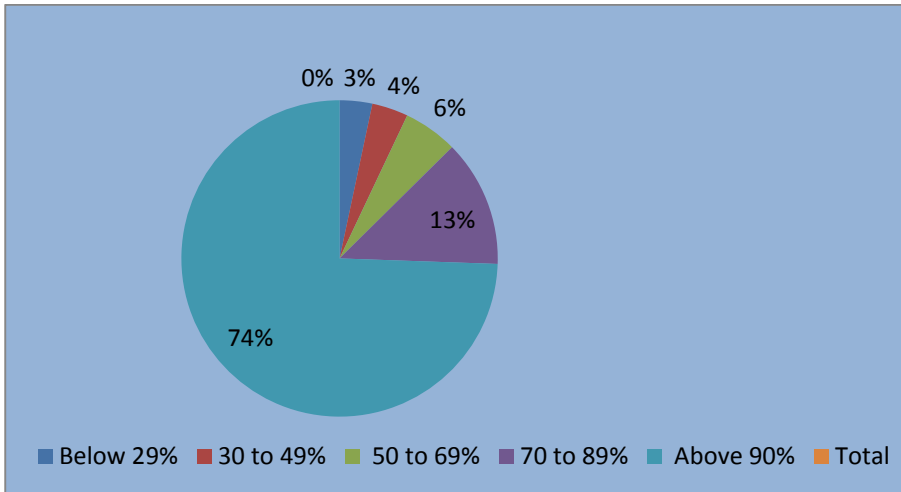
10. What percentage of teachers uses ICT Tools such as LCD Projector, Multimedia, etc. while teaching?

Opinions	Boy	%	Girl	%	Total	%
Below 29%	9	3	6	2	15	2
30 to 49%	10	4	15	4	25	4
50 to 69%	15	5	10	3	32	5
70 to 89%	35	13	65	20	100	17
Above 90%	201	75	234	71	435	72
Total	270	100	330	100	600	100

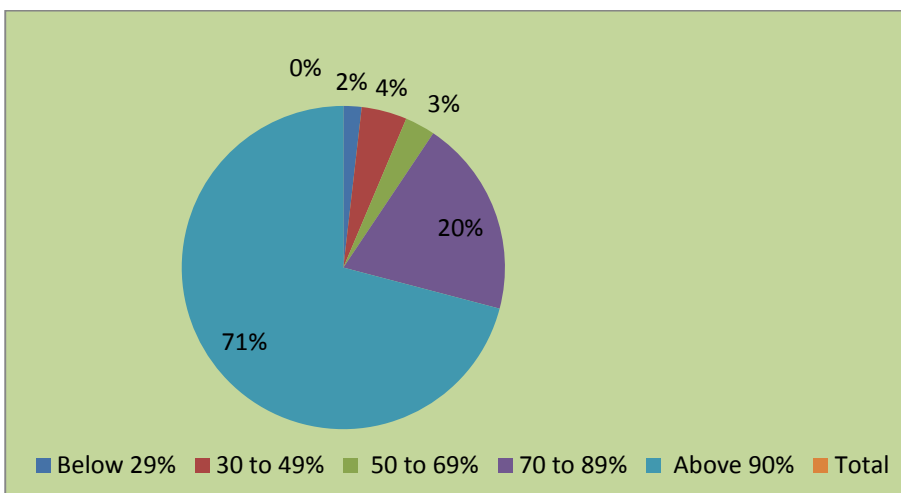
- (a) The opinion of students in the campus for the question **“What percentage of teachers uses ICT Tools such as LCD Projector, Multimedia, etc. while teaching?”** is analyzed. The analysis of survey shows that 67% of students conveyed that above 72% percentage of teachers use ICT Tools such as LCD Projector, Multimedia, etc. while teaching, 17% of students conveyed that 70-89% percentage of teachers use ICT Tools such as LCD Projector, Multimedia, etc. while teaching, 5% of students conveyed that 50-69% percentage of teachers use ICT Tools such as LCD Projector, Multimedia, etc. while teaching, 4% of students conveyed that 30-49% percentage of teachers use ICT Tools such as LCD Projector, Multimedia, etc. while teaching. 2% students conveyed that below 29% percentage of teachers use ICT Tools such as LCD Projector, Multimedia, etc., while teaching.



(b) The opinion of boy students in the campus for the question **“What percentage of teachers uses ICT Tools such as LCD Projector, Multimedia, etc. while teaching?”** is analyzed. The analysis of survey shows that 74% of students conveyed that above 90% percentage of teachers use ICT Tools such as LCD Projector, Multimedia, etc. while teaching, 13 of students conveyed that 70-89% percentage of teachers use ICT Tools such as LCD Projector, Multimedia, etc. while teaching, 6% of students conveyed that 50-69% percentage of teachers use ICT Tools such as LCD Projector, Multimedia, etc. while teaching, 4% of students conveyed that 30-49% percentage of teachers use ICT Tools such as LCD Projector, Multimedia, etc. while teaching. 3% students conveyed that below 29% percentage of teachers use ICT Tools such as LCD Projectors, Multimedia, etc., while teaching.



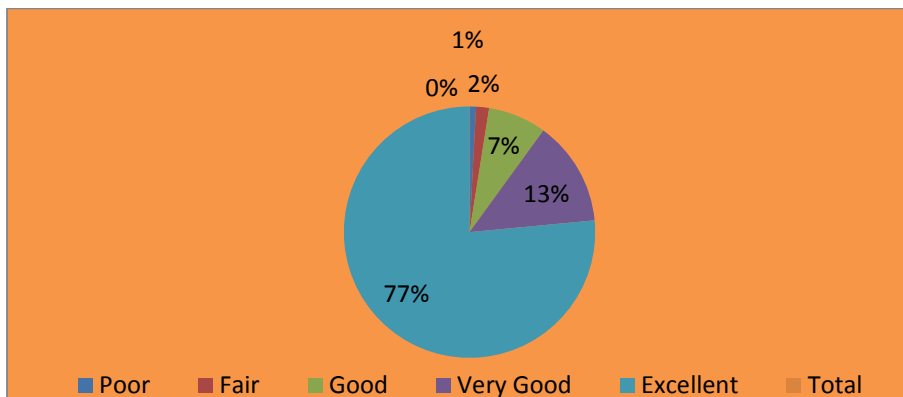
(c) The opinion of girl students in the campus for the question **“What percentage of teachers uses ICT Tools such as LCD Projector, Multimedia, etc. while teaching?”** is analyzed. The analysis of survey shows that 71% of students conveyed that above 90% percentage of teachers use ICT Tools such as LCD Projector, Multimedia, etc. while teaching, 20% of students conveyed that 70-89% percentage of teachers use ICT Tools such as LCD Projector, Multimedia, etc. while teaching, 3% of students conveyed that 50-69% percentage of teachers use ICT Tools such as LCD Projector, Multimedia, etc. while teaching, 4% of students conveyed that 30-49% percentage of teachers use ICT Tools such as LCD Projector, Multimedia, etc. while teaching. 2% students conveyed that below 29% percentage of teachers use ICT Tools such as LCD Projector, Multimedia, etc. while teaching.



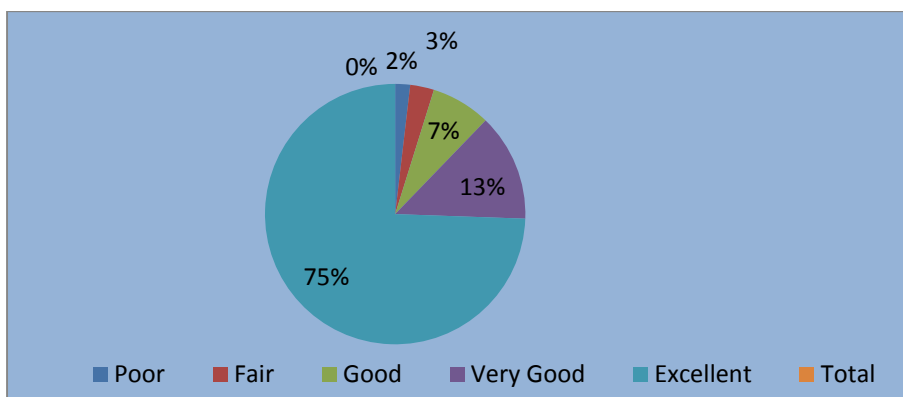
11. The Teacher’s approach to teaching can best be described as

Opinions	Boy	%	Girl	%	Total	%
Poor	5	2	0	0	5	1
Fair	8	3	2	1	10	2
Good	20	7	25	8	45	7
Very Good	36	13	45	14	81	13
Excellent	201	75	258	77	459	77
Total	270	100	330	100	600	100

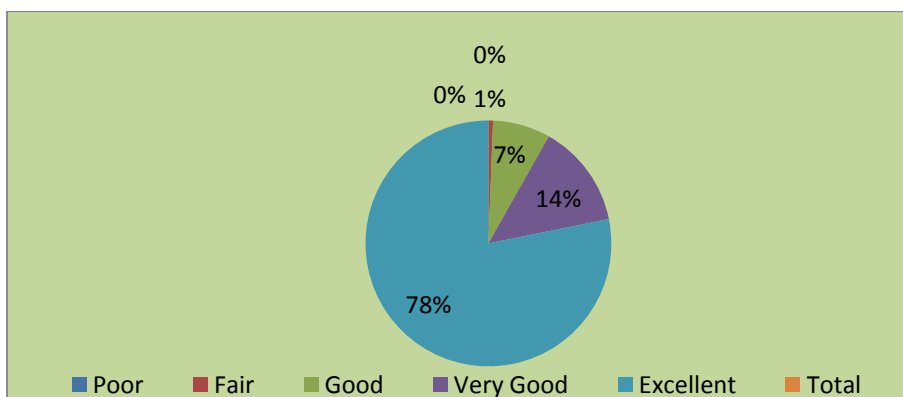
- (a) The opinion of students in the campus for the question ***“The teacher’s approach to teaching can best be described as”*** is analyzed. The analysis of survey shows that 77 % of students conveyed that The teacher’s approach to teaching can best be described as excellent, 13% of students conveyed that the teacher’s approach to teaching can best be described as very good, 7% of students conveyed that the teacher’s approach to teaching can best be described as good, 2% of students conveyed that the teacher’s approach to teaching can best be described as fair. 1% students conveyed that the teacher’s approach to teaching can best be described as poor.



- (b) The opinion of boy students in the campus for the question ***“The teacher’s approach to teaching can best be described as”*** is analyzed. The analysis of survey shows that 75% of students conveyed that the teacher’s approach to teaching can best be described as excellent, 13% of students conveyed that the teacher’s approach to teaching can best be described as very good, 17% of students conveyed that the teacher’s approach to teaching can best be described as good, 3% of students conveyed that the teacher’s approach to teaching can best be described as fair. 2% students conveyed that the teacher’s approach to teaching can best be described as poor.



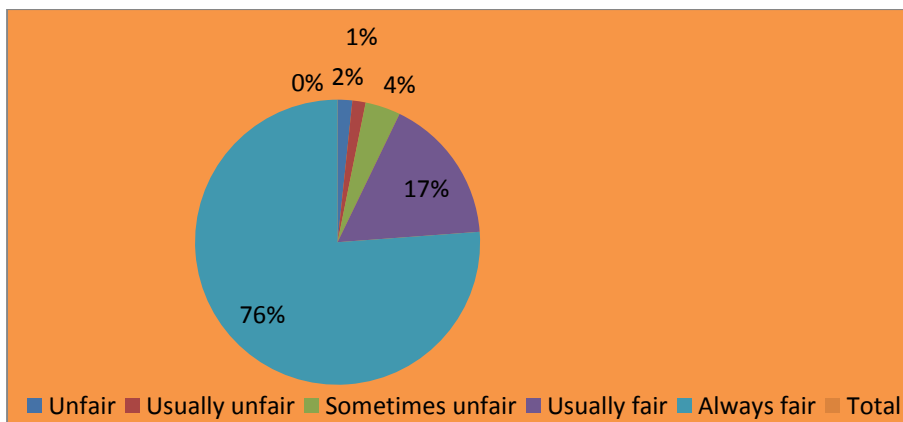
- (c) The opinion of girl students in the campus for the question ***“The teacher’s approach to teaching can best be described as”*** is analyzed. The analysis of survey shows that 78 % of students conveyed that the teacher’s approach to teaching can best be described as excellent, 14% of students conveyed that the teacher’s approach to teaching can best be described as very good, 7% of students conveyed that the teacher’s approach to teaching can best be described as good, 1% of students conveyed that the teacher’s approach to teaching can best be described as fair. 0% students conveyed that the teacher’s approach to teaching can best be described as poor.



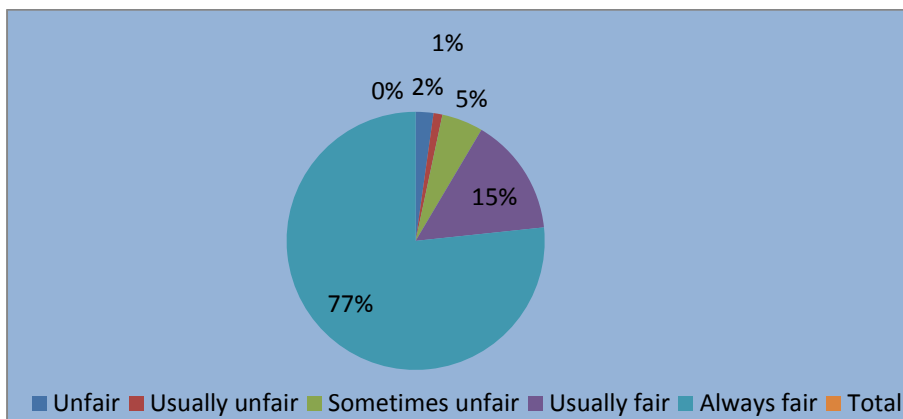
12. Fairness of the internal evaluation process by the teachers

Opinions	Boy	%	Girl	%	Total	%
Unfair	6	2	4	1	10	2
Usually unfair	3	1	6	2	9	1
Sometimes unfair	14	5	10	3	24	4
Usually fair	40	15	60	18	100	17
Always fair	207	77	250	76	457	76
Total	270	100	330	100	600	100

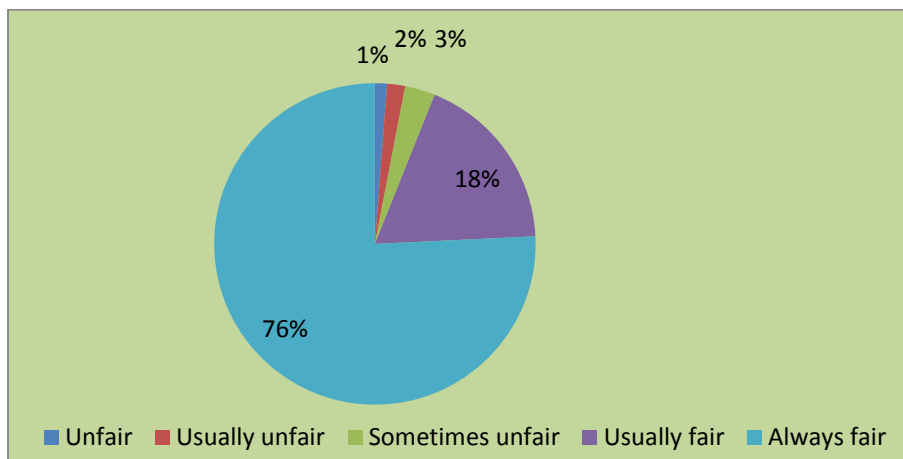
- (a) The opinion of students in the campus for the question **“Fairness of the internal evaluation process by the teachers”** is analyzed. The analysis of survey shows that 76% of students conveyed that fairness of the internal evaluation process by the teachers is always fair, 17% of students conveyed that fairness of the internal evaluation process by the teachers is usually fair, 4% of students conveyed that fairness of the internal evaluation process by the teachers is sometimes fair, 1% of students conveyed that fairness of the internal evaluation process by the teachers is usually unfair. 2% students conveyed that fairness of the internal evaluation process by the teachers is unfair.



- (b) The opinion of boy students in the campus for the question **“Fairness of the internal evaluation process by the teachers”** is analyzed. The analysis of survey shows that 77% of students conveyed that fairness of the internal evaluation process by the teachers is always fair, 15% of students conveyed that fairness of the internal evaluation process by the teachers is usually fair, 5% of students conveyed that Fairness of the internal evaluation process by the teachers is sometimes fair, 1% of students conveyed that fairness of the internal evaluation process by the teachers is usually unfair. 2% students conveyed that fairness of the internal evaluation process by the teachers is unfair.



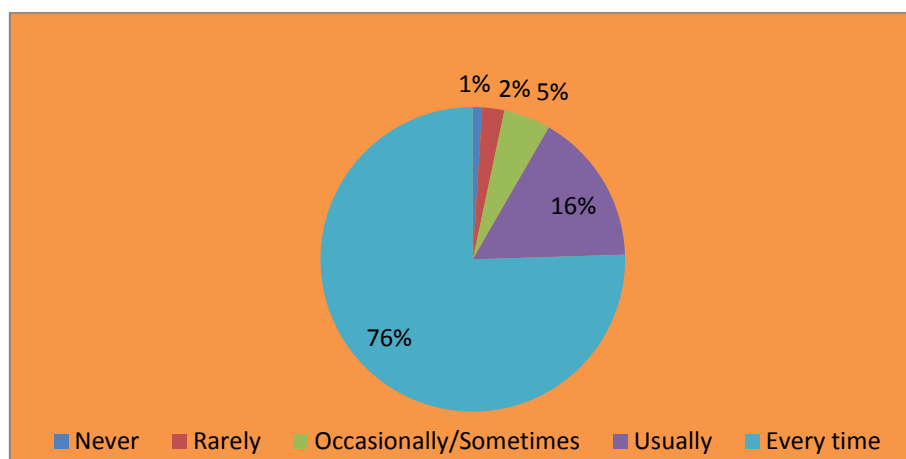
- (c) The opinion of girl students in the campus for the question **“Fairness of the internal evaluation process by the teachers”** is analyzed. The analysis of survey shows that 76% of students conveyed that fairness of the internal evaluation process by the teachers is always fair, 18% of students conveyed that fairness of the internal evaluation process by the teachers is usually fair, 3% of students conveyed that fairness of the internal evaluation process by the teachers is sometimes unfair, 2% of students conveyed that fairness of the internal evaluation process by the teachers is usually unfair. 1% students conveyed that Fairness of the internal evaluation process by the teachers is unfair.



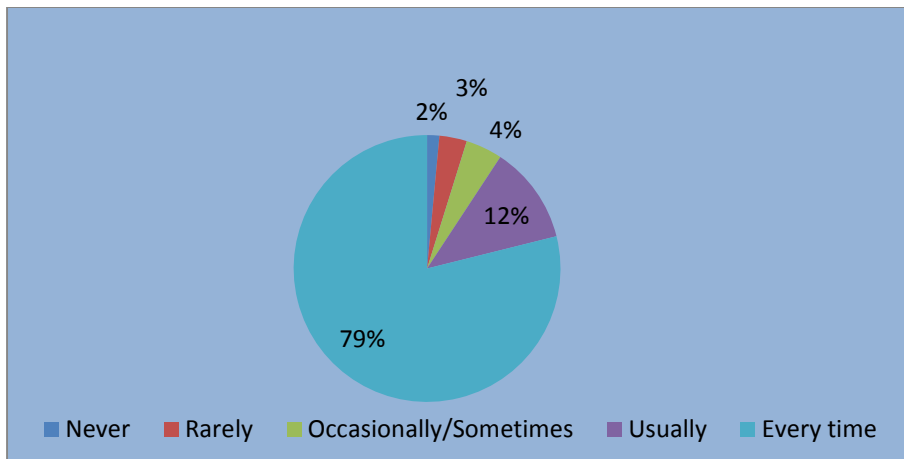
13. **Was your performance in assignments discussed with you?**

Opinions	Boy	%	Girl	%	Total	%
Never	4	2	2	1	6	1
Rarely	9	3	5	2	14	2
Occasionally/Sometimes	12	4	18	5	30	5
Usually	32	12	65	20	97	16
Every time	213	79	240	73	453	76
Total	270	100	330	100	600	100

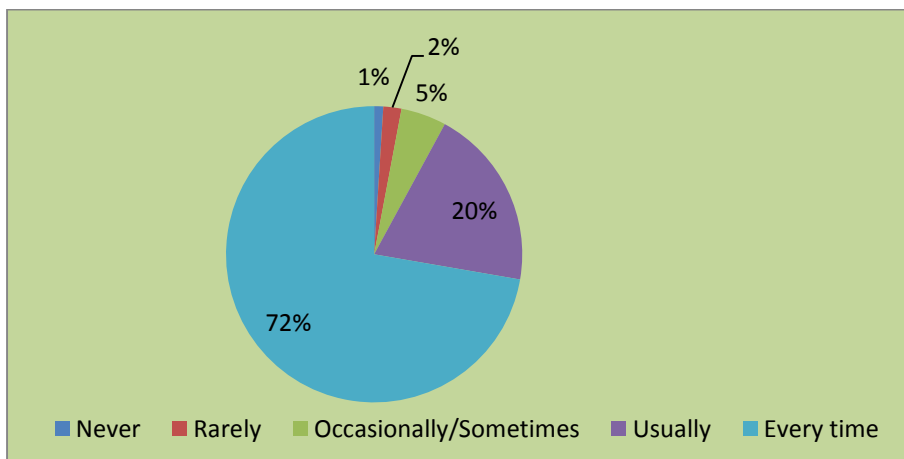
(a) The opinion of students in the campus for the question **“Was your performance in assignments discussed with you?”** is analyzed. The analysis of survey shows that 76% of students conveyed that performance of students in assignments is discussed every time, 16% of students conveyed that performance of students in assignments is discussed usually, 5% of students conveyed that performance of students in assignments is discussed sometimes, 2% of students conveyed that performance of students in assignments is discussed rarely. 1% students conveyed that the performance of students in assignments is never discussed.



(b) The opinion of boy students in the campus for the question **“Was your performance in assignments discussed with you?”** is analyzed. The analysis of survey shows that 79% of students conveyed that performance of students in assignments is discussed every time, 12% of students conveyed that performance of students in assignments is discussed usually, 4% of students conveyed that performance of students in assignments is discussed sometimes, 3% of students conveyed that performance of students in assignments is discussed rarely. 2% students conveyed that the performance of students in assignments is never discussed.



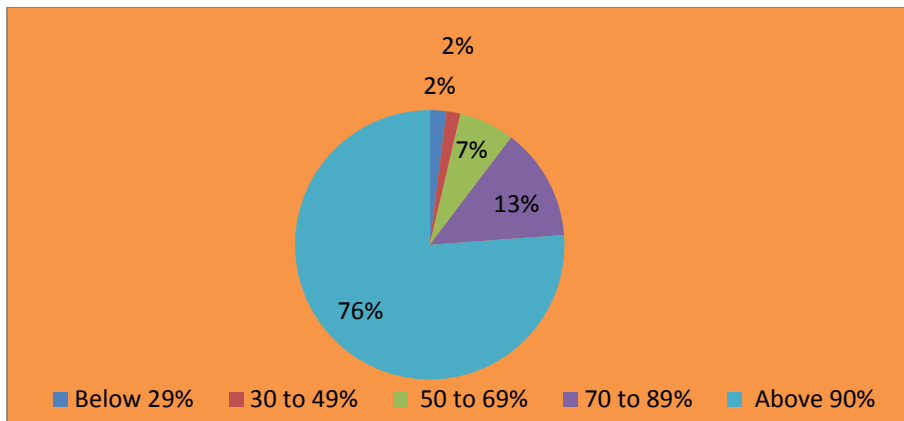
(c) The opinion of girl students in the campus for the question ***“Was your performance in assignments discussed with you?”*** is analyzed. The analysis of survey shows that 72% of students conveyed that performance of students in assignments is discussed every time, 20% of students conveyed that performance of students in assignments is discussed usually, 5% of students conveyed that performance of students in assignments is discussed sometimes, 2% of students conveyed that performance of students in assignments is discussed rarely, 1% students conveyed that the performance of students in assignments is never discussed.



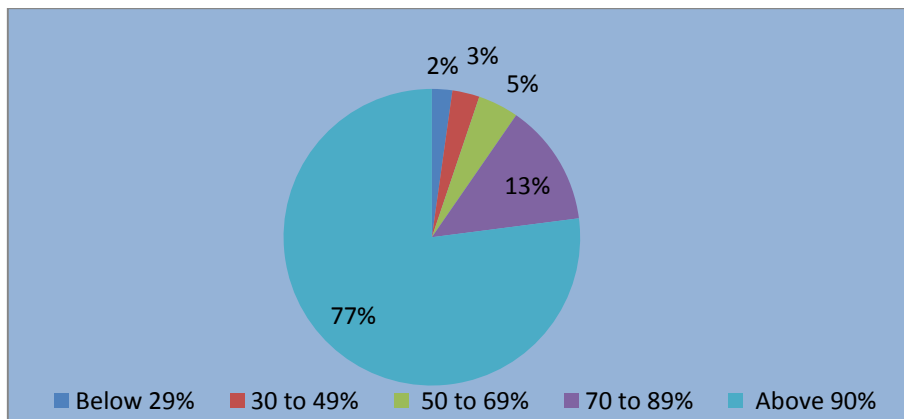
14. Does teachers inform you about your expected competencies, course outcomes and programme outcomes?

Opinions	Boy	%	Girl	%	Total	%
<i>Below 29%</i>	6	2	6	2	12	2
30 to 49%	8	3	2	1	10	2
50 to 69%	12	4	28	8	40	7
70 to 89%	36	13	45	14	81	13
Above 90%	208	78	249	75	457	76
Total	270	100	330	100	600	100

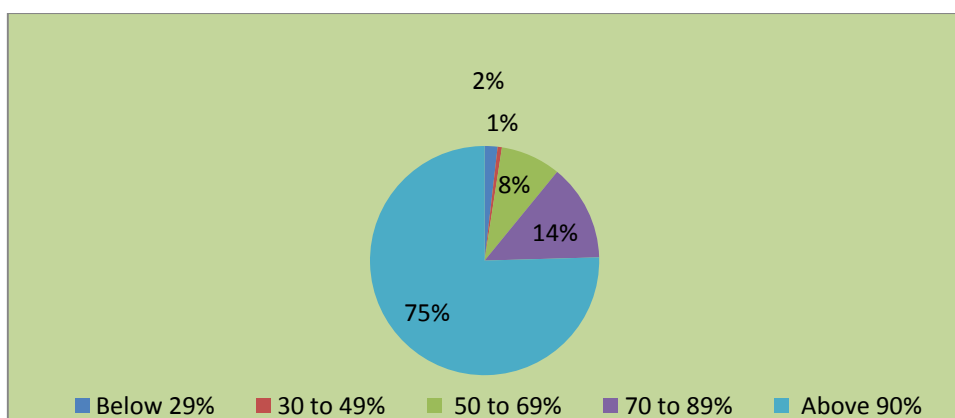
(a) The opinion of students in the campus for the question ***“Does teachers inform you about your expected competencies, course outcomes and programme outcomes?”*** is analyzed. The analysis of survey shows that 76% of students conveyed that teachers inform students about expected competencies, course outcomes and programme outcomes every time, 13% of students conveyed that teachers inform students about expected competencies, course outcomes and programme outcomes usually, 7% of students conveyed that teachers inform students about expected competencies, course outcomes and programme outcomes sometimes, 2% of students conveyed that teachers inform students about expected competencies, course outcomes and programme outcomes rarely. 2% students conveyed that teachers never inform students about expected competencies, course outcomes and programme outcomes.



- (b) The opinion of boy students in the campus for the question “**Does teachers inform you about your expected competencies, course outcomes and programme outcomes?**” is analyzed. The analysis of survey shows that 77% of students conveyed that teachers inform students about expected competencies, course outcomes and programme outcomes every time, 13% of students conveyed that teachers inform students about expected competencies, course outcomes and programme out comes usually, 5% of students conveyed that teachers inform students about expected competencies, course outcomes and programme outcomes sometimes, 3% of students conveyed that teachers inform students about expected competencies, course outcomes and programme outcomes rarely. 2% students conveyed that teachers never informs students about expected competencies, course outcomes and programme outcomes.



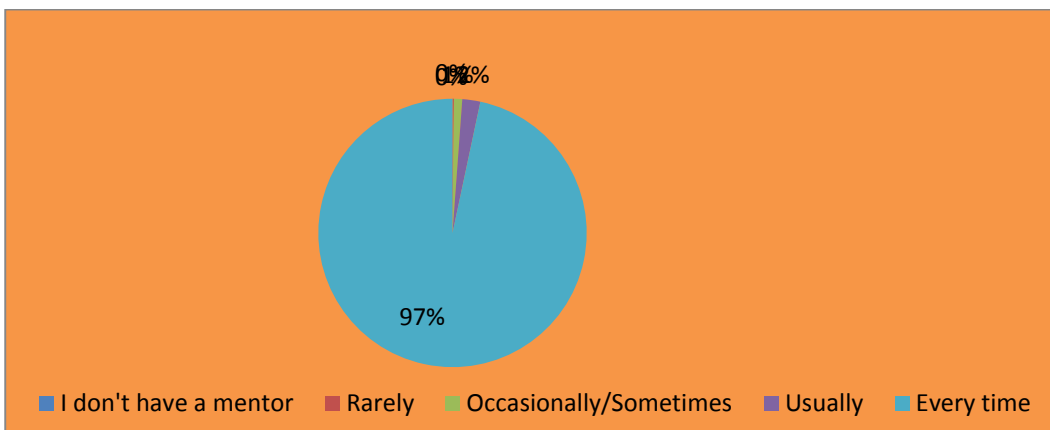
- (c) The opinion of girl students in the campus for the question “**Does teachers inform you about your expected competencies, course outcomes and programme outcomes?**” is analyzed. The analysis of survey shows that 75% of students conveyed that teachers inform students about expected competencies, course outcomes and programme outcomes every time, 14% of students conveyed that teachers inform students about expected competencies, course outcomes and programme outcomes usually, 8% of students conveyed that teachers inform students about expected competencies, course outcomes and programme outcomes sometimes, 1% of students conveyed that teachers inform students about expected competencies, course outcomes and programme outcomes rarely. 2% students conveyed that teachers never inform students about expected competencies, course outcomes and programme outcomes.



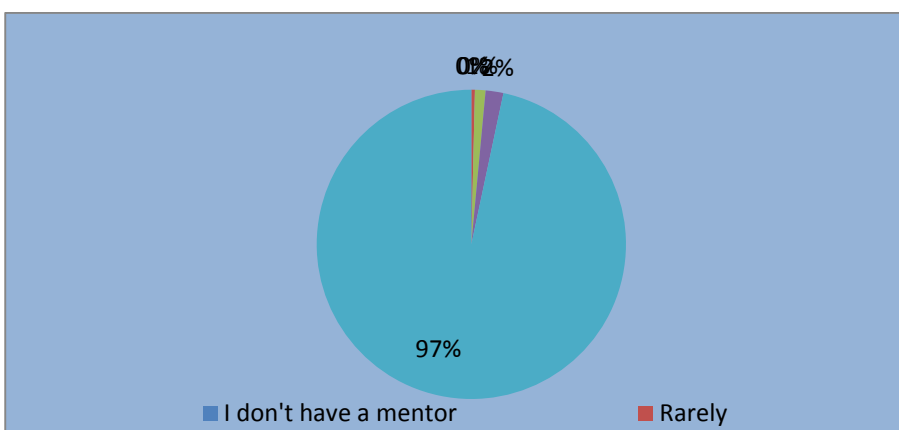
15. ***Your mentor does a necessary follow-up with an assigned task to you.***

Opinions	Boy	%	Girl	%	Total	%
<i>I don't have a mentor</i>	0	0	0	0	0	0
Rarely	1	0	0	0	1	0
Occasionally/Sometimes	3	1	3	1	6	1
Usually	5	2	8	2	13	2
Every time	261	97	319	97	580	97
Total	270	100	330	100	600	100

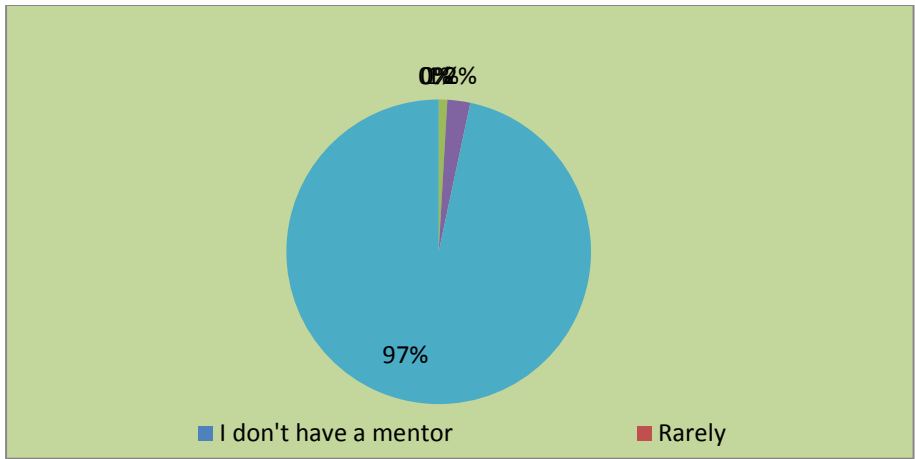
- (a) The opinion of students in the campus for the question ***“Your mentor does a necessary follow-up with an assigned task to you”*** is analyzed. The analysis of survey shows that 97% of students conveyed that mentor does a necessary follow-up with an assigned task every time, 2% of students conveyed that mentor does a necessary follow-up with an assigned task usually, 1% of students conveyed that mentor does a necessary follow-up with an assigned task sometimes, 0% of students conveyed that mentor does a necessary follow-up with an assigned task rarely. 0% students conveyed that the never mentor does a necessary follow-up with an assigned task.



- (b) The opinion of boy students in the campus for the question ***“Your mentor does a necessary follow-up with an assigned task to you”*** is analyzed. The analysis of survey shows that 97% of students conveyed that mentor does a necessary follow-up with an assigned task every time, 2% of students conveyed that mentor does a necessary follow-up with an assigned task usually, 1% of students conveyed that mentor does a necessary follow-up with an assigned task sometimes, 0% of students conveyed that mentor does a necessary follow-up with an assigned task rarely. 0% students conveyed that the never Mentor does a necessary follow-up with an assigned task.



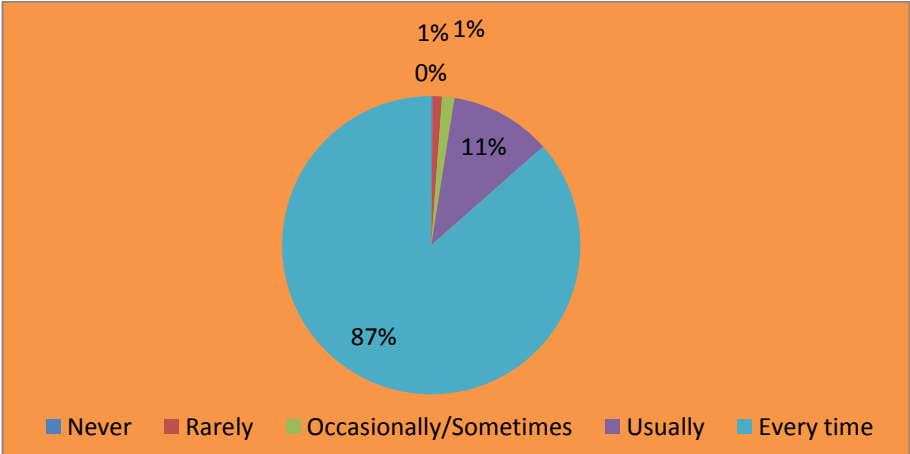
- (c) The opinion of girl students in the campus for the question ***“Your mentor does a necessary follow-up with an assigned task to you”*** is analyzed. The analysis of survey shows that 97% of students conveyed that mentor does a necessary follow-up with an assigned task every time, 2% of students conveyed that mentor does a necessary follow-up with an assigned task usually, 1% of students conveyed that mentor does a necessary follow-up with an assigned task sometimes, 0% of students conveyed that mentor does a necessary follow-up with an assigned task rarely. 0% students conveyed that the never Mentor does a necessary follow-up with an assigned task.



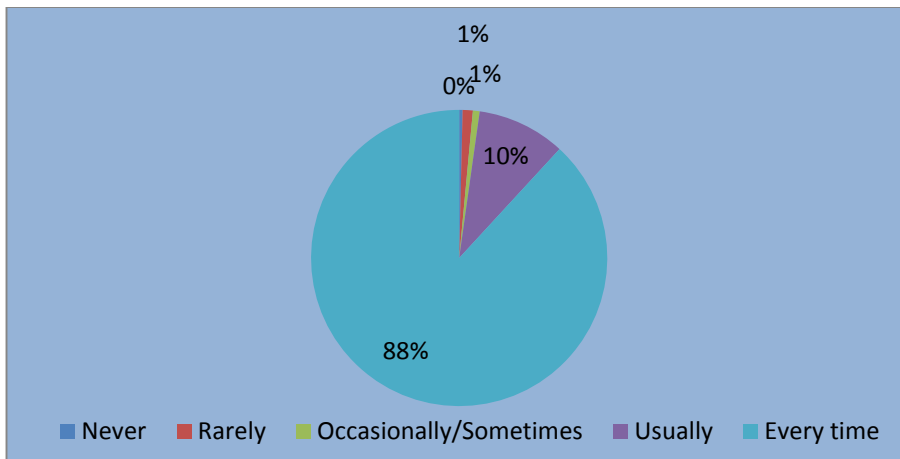
16. Do the teachers illustrate the concepts through examples and applications?

Opinions	Boy	%	Girl	%	Total	%
Never	1	0	0	0	1	0
Rarely	3	1	3	1	6	1
Occasionally/Sometimes	2	1	6	2	8	1
Usually	26	10	40	12	66	11
Every time	238	88	281	85	519	87
Total	270	100	330	100	600	100

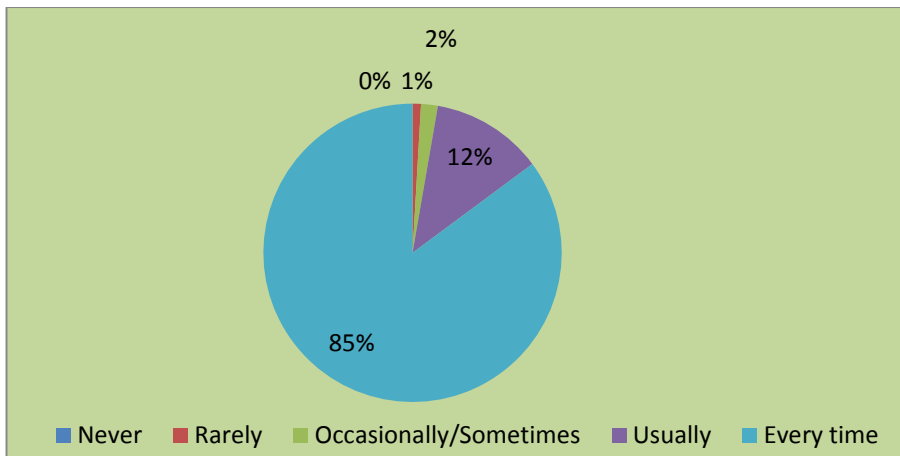
(a) The opinion of students in the campus for the question **“Do the teachers illustrate the concepts through examples and applications?”** is analyzed. The analysis of survey shows that 87% of students conveyed that The teachers illustrate the concepts through examples and applications every time, 11% of students conveyed that The teachers illustrate the concepts through examples and applications usually, 1% of students conveyed that The teachers illustrate the concepts through examples and applications sometimes, 1% of students conveyed that The teachers illustrate the concepts through examples and applications rarely. 0% students conveyed that the teachers never illustrate the concepts through examples and applications.



(b) The opinion of boy students on the campus for the question **'Do the teachers illustrate the concepts through examples and applications?'** is analyzed. The analysis of the survey shows that 88% of students conveyed that the teachers illustrate the concepts through examples and applications every time, 10% of students conveyed that the teachers illustrate the concepts through examples and applications usually, 1% of students conveyed that the teachers illustrate the concepts through examples and applications sometimes, 1% of students conveyed that the teachers illustrate the concepts through examples and applications rarely. 0% of students conveyed that the teachers never illustrate the concepts through examples and applications."



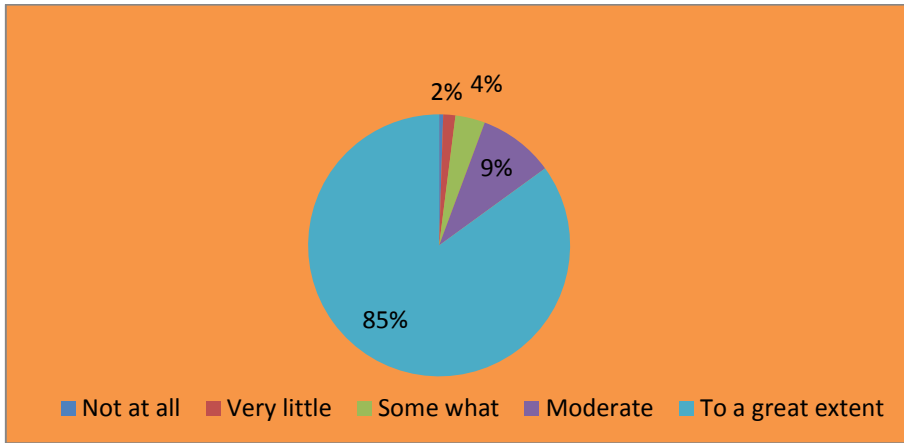
(c) The opinion of girl students on the campus for the question **'Do the teachers illustrate the concepts through examples and applications?'** is analyzed. The analysis of survey shows that 85% of students conveyed that the teachers illustrate the concepts through examples and applications every time, 12% of students conveyed that the teachers illustrate the concepts through examples and applications usually, 2% of students conveyed that the teachers illustrate the concepts through examples and applications sometimes, 1% of students conveyed that the teachers illustrate the concepts through examples and applications rarely. 0% of students conveyed that the teachers never illustrate the concepts through examples and applications



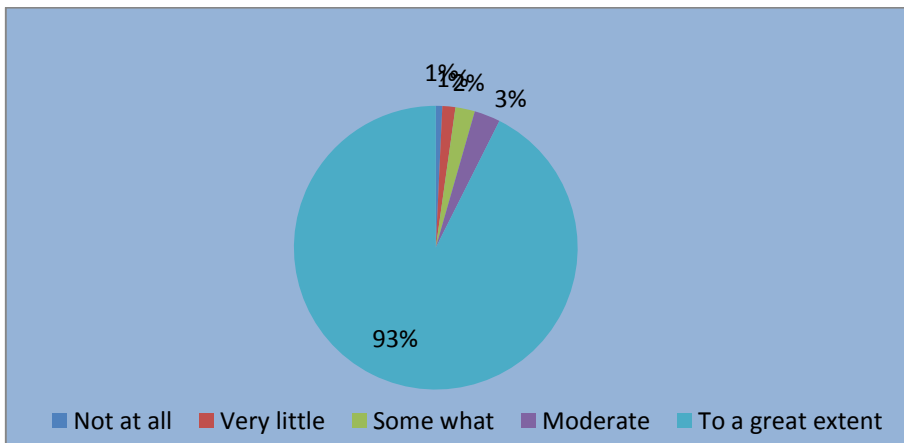
17. Does the institute/teachers use student-centric methods, such as experiential learning, participative learning, and problem-solving methodologies for enhancing learning experiences?

Opinions	Boy	%	Girl	%	Total	%
Not at all	2	1	1	0	3	0
Very little	4	1	5	2	9	2
Some what	6	2	16	3	22	4
Moderate	8	3	48	19	56	9
To a great extent	250	92	260	77	510	85
Total	270	100	330	100	600	100

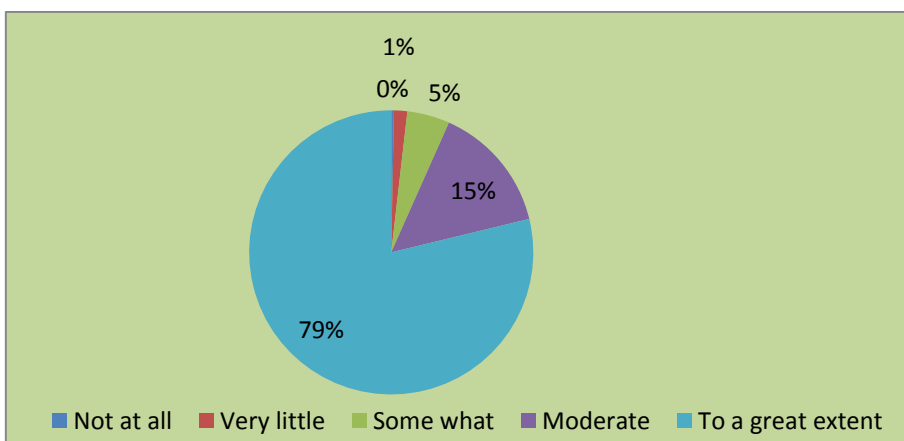
(a) The opinion of students on the campus for the question **'Does the institute/teachers use student-centric methods, such as experiential learning, participative learning, and problem-solving methodologies for enhancing learning experiences?'** is analyzed. The analysis of survey shows that 85% of students conveyed that the institute/teachers use student-centric methods is To a great extent, 9% of students conveyed that the institute / teachers use student-centric methods is moderate, 4% of students conveyed that the institute / teachers use student-centric methods is just somewhat, 2% of students conveyed that the institute / teachers use student-centric methods is very little. 0% students conveyed that the institute / teachers use student-centric methods is Not at all."



- (b) The opinion of boy students in the campus for the question '**Does the institute/teachers use student-centric methods, such as experiential learning, participative learning, and problem-solving methodologies for enhancing learning experiences?**' is analyzed. The analysis of survey shows that 93% of students conveyed that The institute / teachers use student-centric methods is To a great extent, 3% of students conveyed that The institute / teachers use student-centric methods is moderate, 2% of students conveyed that The institute / teachers use student-centric methods is somewhat, 1% of students conveyed that The institute / teachers use student-centric methods is very little. 1% students conveyed that the institute / teachers use student-centric methods is Not at all."



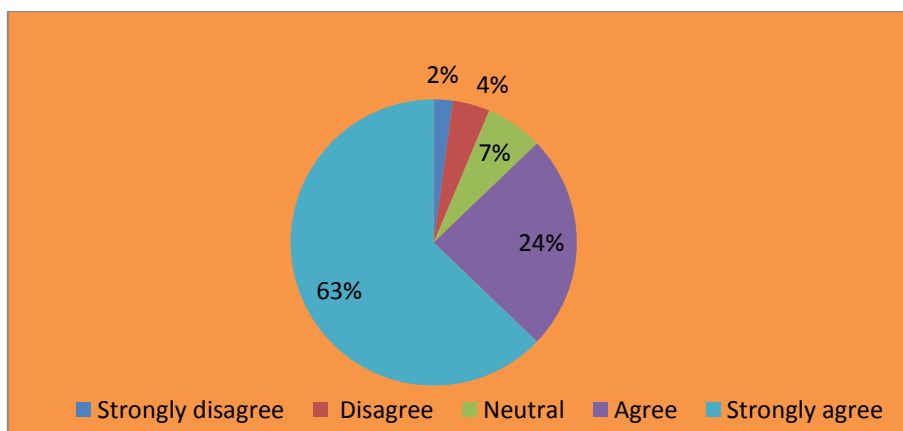
- (c) The opinion of girl's students in the campus for the question '**Does the institute/teachers use student-centric methods, such as experiential learning, participative learning, and problem-solving methodologies for enhancing learning experiences?**' is analyzed. The analysis of survey shows that 79% of students conveyed that The institute/teachers use student-centric methods is To a great extent, 15% of students conveyed that The institute/teachers use student-centric methods is moderate, 5% of students conveyed that The institute/teachers use student-centric methods is somewhat, 1% of students conveyed that The institute/teachers use student-centric methods is very little. 0% students conveyed that the institute/teachers use student-centric methods is Not at all."



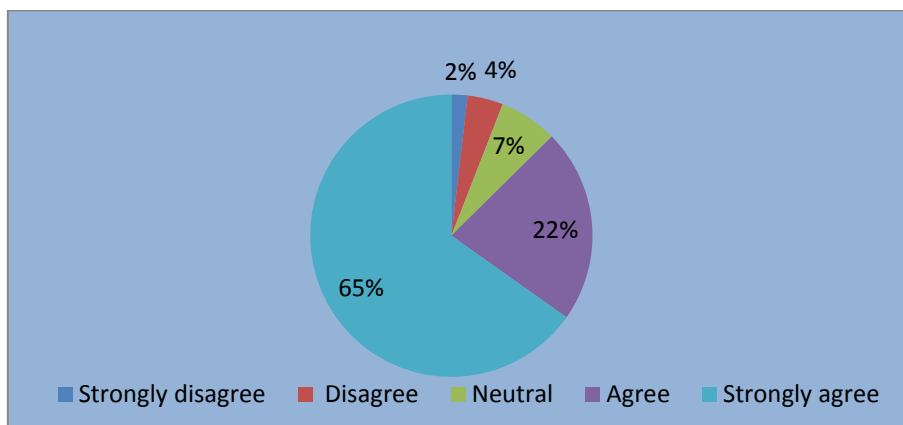
18. Do teachers encourage you to participate in extracurricular activities?

Opinions	Boy	%	Girl	%	Total	%
Strongly disagree	5	2	8	2	13	2
Disagree	11	4	14	4	25	4
Neutral	18	7	21	6	39	7
Agree	60	22	86	26	146	24
Strongly agree	176	65	201	62	377	63
Total	270	100	330	100	600	100

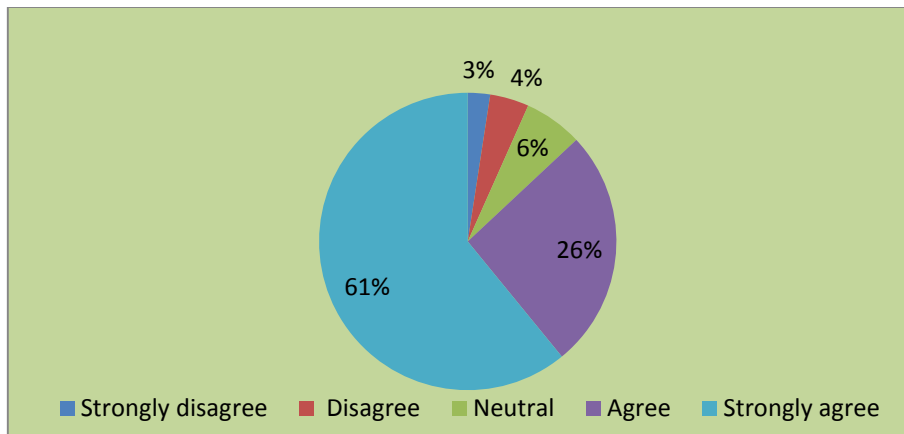
(a) The opinion of students in the campus for the question “Do the teachers encourage you to participate in extracurricular activities?” is analyzed. The analysis of survey shows that 63% of students conveyed that the Teachers encourage them to participate in extracurricular activities is Strongly agree, 24% of students conveyed that the Teachers encourage them to participate in extracurricular activities is agree, 7% of students conveyed that the Teachers encourage them to participate in extracurricular activities is neutral, 4% of students conveyed that the Teachers encourage them to participate in extracurricular activities is disagree. 2% student’s conveyed that the Teachers encourage them to participate in extracurricular activities is strongly disagree.



(b) The opinion of boy students in the campus for the question 'Do the teachers encourage you to participate in extracurricular activities?' is analyzed. The analysis of survey shows that 65% of students conveyed that the Teachers encourage them to participate in extracurricular activities is strongly agree, 22% of students conveyed that the Teachers encourage them to participate in extracurricular activities is agree, 7% of students conveyed that the Teachers encourage them to participate in extracurricular activities is neutral, 4% of students conveyed that the Teachers encourage them to participate in extracurricular activities is disagree. 2% students conveyed that the Teachers encourage them to participate in extracurricular activities is strongly disagree."



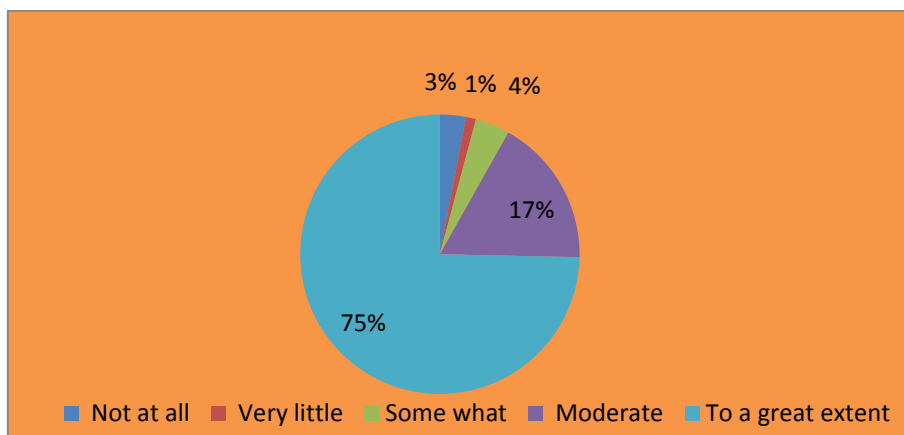
(c) The opinion of boy students in the campus for the question 'Do the teachers encourage you to participate in extracurricular activities?' is analyzed. The analysis of survey shows that 61% of students conveyed that the Teachers encourage them to participate in extracurricular activities is strongly agree, 26% of students conveyed that the Teachers encourage them to participate in extracurricular activities is agree, 6% of students conveyed that the Teachers encourage them to participate in extracurricular activities is neutral, 4% of students conveyed that the Teachers encourage them to participate in extracurricular activities is disagree. 3% students conveyed that the Teachers encourage them to participate in extracurricular activities is strongly disagree."



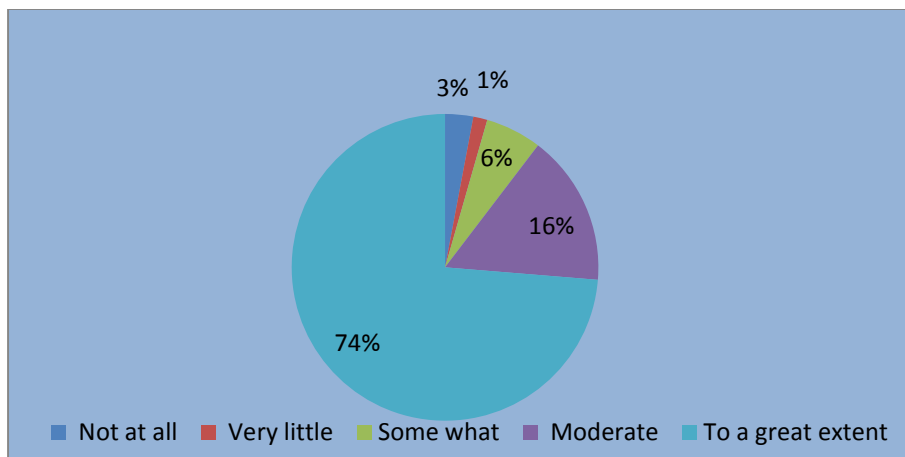
19. Does the efforts are made by the institute / teachers to inculcate soft skills, life skills and employability skills to make you ready for the world of work's

Opinions	Boy	%	Girl	%	Total	%
Not at all	8	3	10	3	18	3
Very little	4	1	3	1	7	1
Some what	16	6	8	2	24	4
Moderate	43	16	60	18	103	17
To a great extent	199	74	249	76	448	75
Total	270	100	330	100	600	100

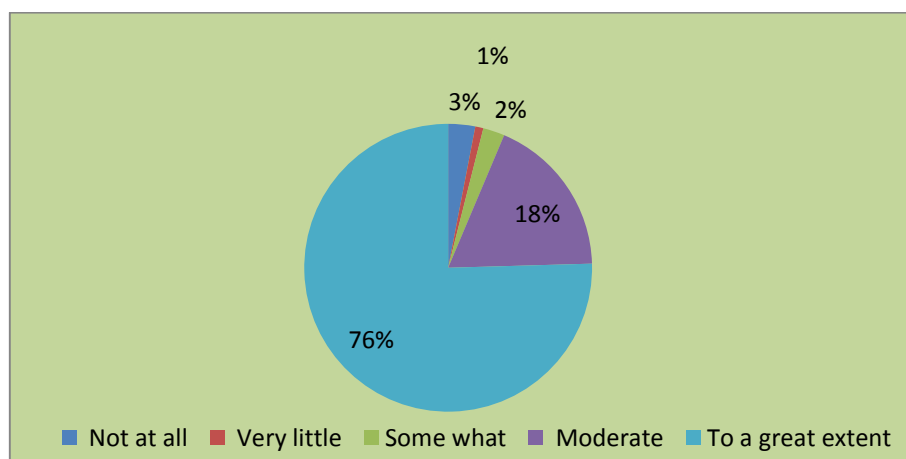
- a) The opinion of students in the campus for the question “Does the efforts are made by the institute / teachers to inculcate soft skills, life skills and employability skills to make you ready for the world of works” is analyzed. The analysis of survey shows that 75% of students conveyed that the Efforts are made by the institute/ teachers to inculcate soft skills, life skills and employability skills is To a great extent, 17% of students conveyed that the efforts are made by the institute/ teachers to inculcate soft skills, life skills and employability skills is Moderate, 4% of students conveyed that the efforts are made by the institute/teachers to inculcate soft skills, life skills and employability skills is Somewhat, 1% of students conveyed that the efforts are made by the institute/ teachers to inculcate soft skills, life skills and employability skills is Very little. 3% students conveyed that the efforts are made by the institute/ teachers to inculcate soft skills, life skills and employability skills are Not at all.



- b) The opinion of boy students in the campus for the question “Does the efforts are made by the institute / teachers to inculcate soft skills, life skills and employability skills to make you ready for the world of works” is analyzed. The analysis of survey shows that 74% of students conveyed that the Efforts are made by the institute/ teachers to inculcate soft skills, life skills and employability skills is To a great extent, 16% of students conveyed that the efforts are made by the institute/ teachers to inculcate soft skills, life skills and employability skills is Moderate, 6% of students conveyed that the efforts are made by the institute/teachers to inculcate soft skills, life skills and employability skills is Somewhat, 1% of students conveyed that the efforts are made by the institute/ teachers to inculcate soft skills, life skills and employability skills is Very little. 3% students conveyed that the efforts are made by the institute/ teachers to inculcate soft skills, life skills and employability skills are Not at all.



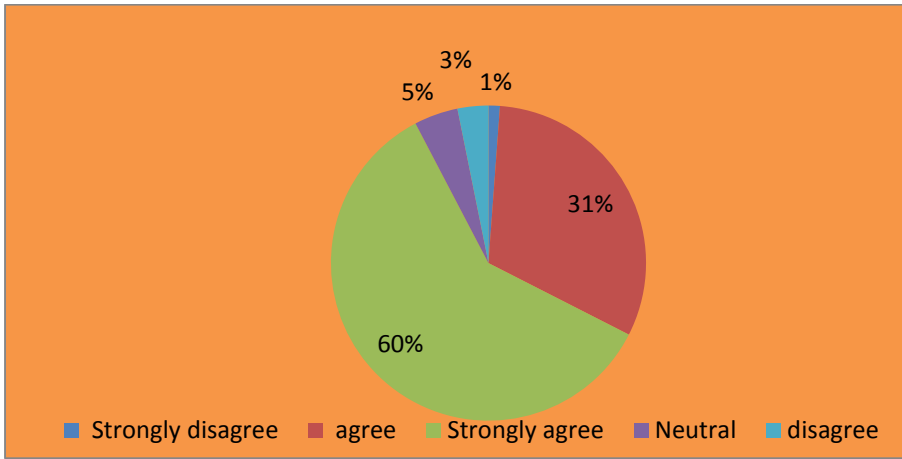
- c) The opinion of girl students in the campus for the question “*Does the efforts are made by the institute / teachers to inculcate soft skills, life skills and employability skills to make you ready for the world of works*” is analyzed. The analysis of survey shows that 76% of students conveyed that the Efforts are made by the institute/ teachers to inculcate soft skills, life skills and employability skills is To a great extent, 18% of students conveyed that the efforts are made by the institute/ teachers to inculcate soft skills, life skills and employability skills is Moderate, 2% of students conveyed that the efforts are made by the institute/teachers to inculcate soft skills, life skills and employability skills is Somewhat, 1% of students conveyed that the efforts are made by the institute/ teachers to inculcate soft skills, life skills and employability skills is Very little. 3% students conveyed that the efforts are made by the institute/ teachers to inculcate soft skills, life skills and employability skills are Not at all.



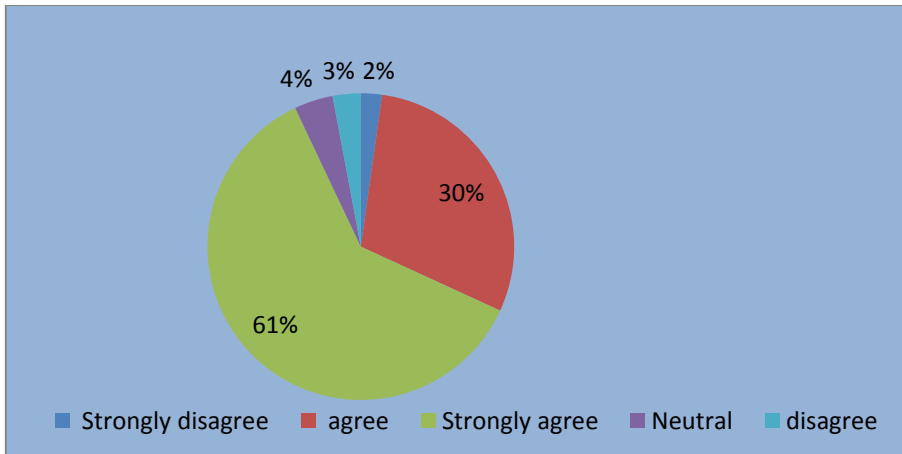
20. Is overall quality of teaching-learning process in your institute is very good?

Opinions	Boy	%	Girl	%	Total	%
Strongly disagree	6	2	1	1	7	1
agree	80	30	108	31	188	31
Strongly agree	165	61	194	60	359	60
Neutral	11	4	16	5	27	5
disagree	8	3	11	3	19	3
Total	270	100	330	100	600	100

- a) The opinion of the students in the campus for the question 'Is the overall quality of teaching-learning process in your institute very good?' is analyzed. The analysis of survey shows that 3% of students conveyed that the overall quality of teaching-learning process is disagree, 5% of students conveyed that the overall quality of teaching-learning process is Neutral, 60% of students conveyed that the overall quality of teaching-learning process is Strongly agree, 31% of students conveyed that the overall quality of teaching-learning process is agree. 1% students conveyed that the overall quality of teaching-learning process is strongly disagree."



b) The opinion of boy students in the campus for the question **'Is the overall quality of teaching-learning process in your institute very good?'** is analyzed. The analysis of survey shows that 3% of students conveyed that the overall quality of teaching-learning process is disagree, 4% of students conveyed that the overall quality of teaching-learning process is Neutral, 61% of students conveyed that the overall quality of teaching-learning process is Strongly agree, 30% of students conveyed that the overall quality of teaching-learning process is agree. 1% students conveyed that the overall quality of teaching-learning process is strongly disagree."



c) The opinion of girl students in the campus for the question **'Is the overall quality of teaching-learning process in your institute very good?'** is analyzed. The analysis of survey shows that 0% of students conveyed that the overall quality of teaching-learning process is disagree, 3% of students conveyed that the overall quality of teaching-learning process is Neutral, 75% of students conveyed that the overall quality of teaching-learning process is Strongly agree, 33% of students conveyed that the overall quality of teaching-learning process is agree. 0% students conveyed that the overall quality of teaching-learning process is strongly disagree."

